

MAPLE VALLEY news

A local paper of today!

Hastings Public Library
227 E. State St
Hastings MI 49058-1817

MVN

HASTINGS PUBLIC LIBRARY
227 EAST STATE ST
HASTINGS, MI 49058

PRSR STD
US POSTAGE
PAID
HASTINGS MI
PERMIT NO.7

Published by J-Ad Graphics, Inc.
1351 N. M-43 Highway, Hastings, MI 49058
Phone: (269) 945-9554
Vol. 137-No. 3, January 17, 2009

School board reverses decision to cut part-time curriculum director

no photo

by Sandra Ponsetto
Staff Writer

After getting a recommendation from the school improvement committee, hearing an impassioned plea from a high school teacher, and receiving a letter from another, a report from Maple Valley High School Principal Todd Gonser and Maple Valley Superintendent of Schools Kim Kramer, the Maple Valley Board of Education approved a motion to reinstate part-time curriculum director Julie Swartz by a 5-

1 vote. Trustee Tim Burd cast the dissenting vote and newly elected trustee Mark Wenger was absent.

In November, the board had voted unanimously to lay off either Swartz or fellow part-time curriculum director Mary Slag by a 4-3 vote (trustees Teresa Allen, Burd, and Kevin Rost voting in favor of the layoff and Wayne Curtis and Andrea Montgomery and former board president Jerry Sessions voting against the motion). The layoff was part of board-approved cuts totaling \$224,604 in an attempt to

defray part of the projected \$468,434 deficit for the 2008-09 school year.

During the public comment portion of the regular January meeting Monday night, Maple Valley High School English language arts and leadership teacher Norma Jean Acker expressed her concern about the reduction of one part-time curriculum director.

"I'm concerned about the loss of one part-time curriculum director because I feel that the responsibility is too much for one part-time person to handle," she said. "We have made great head-

way in the last five years with testing, preparing for testing, No Child Left Behind and mandated graduation requirements. Under Julie and Mary, we've made real progress.

And we are so close to where we want to be that I'm really concerned about the cut ... curriculum and academics, that's our No. 1 job here ... I know we need to make cuts, and there is no way to make everyone happy, but I wish the board would rethink the importance of curriculum. I don't think one person can do this ... Our top priority is to get

our kids to state level expectations and beyond."

During his comments, Gonser gave a report on the State of Michigan's mandated graduation requirements. He also spoke about cut scores, opt-out tests and certificates of completion.

"The curriculum director's position is critical to what we are trying to accomplish," said Gonser. "In the last five years, we have come closer to where we want and need to be to reach our goals."

During the superintendent's report, Kramer gave a presentation on the state's

graduation requirements and personal curriculums. Toward the close of his presentation, Kramer also stated that Slag would need to concentrate on state-mandated requirements, which would mean turning her attention from the K-12 curriculum.

When Rost gave the school improvement committee report, he stated that the committee recommended that the board reconsider its decision regarding the curriculum director's post.

SCHOOL BOARD,
continued on page 3

Former Maple Valley News reporter to be part of inauguration committee

Chief Petty Officer Teresa Frith, a former *Maple Valley News* reporter and Nashville resident, has been working in the public affairs department of the Armed Forces Inaugural Committee, which is preparing to support the 56th presidential inauguration in Washington, D.C., Jan. 20.

The AFIC is a joint service committee charged with coordinating all military ceremonial support for the inaugural period. As a joint committee, it includes members from all branches of the armed forces of the United States, including reserve and National Guard components.

Chief Petty Officer Frith is assigned to public affairs visual information directorate as a journalist. She is responsible for writing stories about AFIC personnel, captioning

photography for archival purposes and documenting AFIC operations for immediate operational needs and long-term continuity. She is an active duty member of the U.S. Navy and has served for 29 years and reported for the *Maple Valley News* 1993 to 1997.

"This is a very interesting event, and I am proud to be a part of it," said Frith. "It is exciting to see how the process of inaugurating the president works."

The U.S. Armed Forces have participated in presidential inaugurations since April 30, 1789, when members of the U.S. Army, local militia units and Revolutionary War veterans escorted George Washington to his first inauguration ceremony at Federal Hall in New York City. Now, 220 years

later, the participation of the armed forces continues to honor the commander in chief, recognize civilian control of the armed forces and celebrate democracy, added Frith.

Participation by the armed forces traditionally includes musical units, marching bands, color guards, salute batteries and honor cordons. Marines, soldiers, sailors, airmen and Coast Guardsmen assigned to AFIC also provide assistance to the presidential inaugural committee, a not-for-profit, partisan organization representing the president-elect, and the Joint Congressional Committee on Inauguration Ceremonies.

The secretary of defense has authorized nearly 750 service members to be assigned to AFIC by

Inauguration Day to coordinate Department of Defense support in and around the District of Columbia. Historically, as many as 5,000 service members have participated in the celebration, both in view of the public and behind the scenes.

Chief Petty Officer Frith's role in the inauguration is like that of any other essential military mission during peace or war, she said.

"Just as our military men and women are showing their commitment to this country while deployed around the globe, participation of service members in this traditional event demonstrates our military's support to the nation's newly elected commander in chief," she said.



U.S. Navy Chief Petty Officer Teresa Frith, a member of the Armed Forces Inaugural Committee (AFIC), stands in front of the U.S. Capitol in Washington, D.C. on Dec. 15, 2008. Frith will help AFIC carry on a tradition, which dates back more than 200 years, of honoring the new commander in chief and recognizing civilian control of the military. AFIC is a joint-service organization responsible for providing military ceremonial support to the 56th Presidential Inauguration, which will take place on Jan. 20, 2009. (DoD photo by Technical Sgt. Suzanne Day, U.S. Air Force/Released)

Homeless survey will be Jan. 28

Wednesday, Jan. 28, Barry County Continuum of Care and Barry County United Way will conduct a survey to determine the number of homeless people in Barry County.

This count will be taken in a brief 11-question survey. Agencies and community residents will be reaching out to schools, businesses, campgrounds and other entities that may have contact with those without a home.

The survey is being conducted for three reasons:

- To gather an accurate number of individuals and families in need of stable, affordable, safe housing in Barry County. These people must be considered homeless on the day of the count. Information will be entered on grant applications focus-

ing on housing and emergency assistance dollars, updating county administration on current needs and education of the community.

- To evaluate current need with existing resources.

- To educate the community regarding ongoing needs of neighbors and friends.

Every year, Michigan State Housing Development Authority (MSHDA) requires its grant recipients to conduct a point-in-time count of all people homeless in each county. Information from the survey will be kept confidential. The data needed from each homeless person includes: First three letters of the first and last name, date of birth and gender. This information will allow the program to eliminate duplications.

Barry County will forward its count results to MSHDA in February. These numbers will be used to lobby for additional funding for housing, heating and utility assistance.

Anyone who is homeless or knows of someone who is should contact Sharon Boyle at Barry County United Way, 269-945-4010.

Individuals also will be gathering information at the Fresh Food Initiative located at the First United Methodist Church on Green Street that morning.

"The Barry County Continuum of Care has worked very hard these past eight years to support the creation of Green Gables Haven, open communication within agencies in the county in order to share resources

and allow more assistance to be given to our residents and continuously look for grant opportunities that will allow Barry County residents to receive assistance and support them in becoming independent community residents," said Boyle. "We have seen many assistance recipients become involved in helping others and giving back to the same program that they received assistance from. This day and count is very important to all of us."

Below is a definition of homelessness that will be used Jan. 28.

The Department of Housing and Urban Development (HUD) defines homeless persons as those who are sleeping in places

SURVEY, continued on page 4

In This Issue...

- Lions rout Rams for their second conference win
- Maple Valley and Lakewood High School students combine for "Wast Side Story"
- Caldwell participates in CMU production of 'Kiss Me, Kate'
- 'Forever Plaid' opens next weekend

'Forever Plaid' opens next weekend in Vermontville

The Revue at the Vermontville Opera House downtown Vermontville, will perform "Forever Plaid" Jan. 23, 24, 25, 30, 31 and Feb. 1.

Before the performance, audience members can enjoy dessert and coffee with a Night in Vegas show. Reservations are recommended by calling Hollie at 517-285-4037 or e-mail therevue1@yahoo.com. Assigned table tickets on the main floor are \$12, and open seating in the balcony is \$8 for adults, \$7 for seniors/students, and \$5 for children under 12.

Friday and Saturday shows start at 7 p.m. and Sundays at 3 p.m. Doors open and serving of dessert starts 30 minutes before each show, which will feature comedy and nostalgic songs from the 1950s.

In "Forever Plaid" four guys (Sparky, Smudge, Jinx and Frankie) love to sing. They all meet in high school (1956), when they joined the audio-visual club. Discovering they share an affection for music and entertaining, they get

together and dream of becoming like their idols — The Four Aces, The Four Lads, The Four Freshmen, The Hi-Los and The Crew Cuts.

The four guys doing this show in Vermontville have much in common with the 'Plaid' story. Three of the fellows, Bill Reynolds, Jeremy Schneider and Ryan Rosin, did meet in high school and they loved music and have developed a long and deep friendship. Bill and Ryan from Maple Valley met Jeremy from St. Johns through the Lions Band.

After graduating in 1990, Reynolds went to Lansing Community College and Rosin and Schneider studied at Western and were roommates for a few years.

In the summer of 1996, Reynolds started The Revue with the help of his two best friends. In the summer of 1998, their dream of doing 'Plaid' came true. Reynolds was married and had only one child at that time. Schneider was single and Rosin pro-

posed to his wife on stage at the last performance of 'Plaid.' That fall, Schneider, Rosin, and Lucas, the fourth member of 'Plaid,' went to Kalamazoo Civic Theater to perform the show. The Civic loved the performance and entered the group in state competition. They won state, regionals, and placed fourth at nationals in Memphis.

After that, Schneider left Michigan and did summer stock theater at Timber Lake Playhouse in Illinois. Rosin went back to college, got married and started teaching at Maple Valley High School.

Reynolds continued producing shows and always said that when Schneider and Rosin came back, he wanted to do 'Plaid' one more time. That time has come.

Reynolds now has three children and is an ultrasound technologist at Pennock Hospital. His wife has supported his love of theater all these years.

Rosin and Schneider are both married and each has



Josh Leatherman (from left) Bill Reynolds, Jeremy Schneider and Ryan Rosin do the entire Ed Sullivan Show in three minutes and 11 seconds. They sing, "Lady of Spain," while they mime Groucho, spinning plates, ballet, Jose Jimenez and Topo Gigio.

two children under the age of 4. Rosin is in his 11th year of teaching choir and chemistry at MVHS and Schneider, a former math teacher, is in sales. Their talents have meshed in making this production of "Forever Plaid," with Reynolds producing the show, Schneider directing, and Rosin serving as musical director.

They teamed up with Josh Leatherman, originally from Battle Creek, who now lives in Nashville with his wife, Hillary, and they are expecting their first child. Leatherman completes the quartet, bringing his singing and musical ability to the group.

Even though this is his debut to the stage, he fits in as a "Plaid." During the day, this Olivet College grad teaches math at Battle Creek Central, his alma mater, and one night a week he can be found teaching at KCC. He is also a youth leader and in the worship band, playing bass and

singing at Grace Community Church in Nashville.

Reynolds is especially busy now with not only doing the show but with packing up and moving costumes and equipment from the opera house to The Revue's new home at the Masonic Lodge

in Nashville.

Since announcing the move, The Revue has found many generous and giving supporters who are helping Reynolds with the move and remodeling of the new facility. The move will officially be made March 1.



Bill Reynolds (front, from left) Ryan Rosin (back) Jeremy Schneider and Josh Leatherman, not knowing much about romance, imagine that their beautiful Spanish teacher's first name was Perfidia like the song of the same name.



(From left) Jeremy Schneider, Ryan Rosin, Josh Leatherman, Bill Reynolds decide that the choreography for the next number is too complicated using real microphones, so they use what they used in rehearsal in the stock room of Smudge's family's plumbing supply company — plumbers' helpers.

Fourth-generation Vermontville syrup producers ready for first season

by Sandra Ponsetto
Staff Writer

While all of Maple Valley is still in a deep freeze Shane Hickey and Nick Nisse,

already have been hard at work anticipating the warmer days that would usher in their first season as proprietors of Hilltop Maple, located at

11708 Cipio Hwy., in Vermontville.

"This is our first year, and we have a lot of things to get ready. We have a completely

new facility; everything is brand new," said Hickey. "We have a wood-fired 5-by-16-foot arch with piggyback or steam away."

While this is the first season for Nisse and Hickey's new sugar hut, Hickey is no stranger to syrup production. He cannot remember what year his great-grandfather got started in the maple syrup business, but he is the fourth generation in his family to become a producer.

"My dad still has a bottle he saved from the first batch of syrup he made back in the early '60s," said Hickey.

While properly bottled and stored maple syrup never goes bad, Hilltop customers can expect fresh custom-boiled and bottled maple syrup.

"For people who tap their own trees but can't afford their own evaporator, we custom boil on the third," said Hickey. "That means the customer brings in the sap and the bottles or cans and gets two-thirds of the syrup it yields and we get one-third. Most producers boil on halves."

Hickey and Nisse also will be tapping 4,000 sugar maples using both tubing and buckets. Hilltop Maple products will



Nick Nisse and Shane Hickey, the proprietors of Hilltop Maple, stand in front of their sugar hut.

include fresh bottled maple syrup, maple candy, cream and lipstick.

Customers can visit the Hilltop Maple booth at the

annual Vermontville Maple Syrup Festival April 24 to 26 in downtown Vermontville or they may call 517-202-6975.

Coblentz General Store
Store Closing Jan. 31st

STOP IN FOR
GREAT DEALS

UP TO 50% DISCOUNTS

BUY NOW & SAVE

HOURS: Wed., Thur., Fri. & Sat. 9:30AM - 6PM
Corner of Ionia Rd. & Lawrence Hwy.

Groceries • Power & Hand Tools Plus Much, Much More

Diana's Place
The Place to Go for Professional Styling

MEN, WOMEN & CHILDREN
HAIR STYLING & NAILS

Open Tuesday - Friday
S.E. Corner of M-66 & Thornapple Lake Rd.
1-517-852-9481

New programs for entrepreneurs and small businesses in Barry County

Barry County Economic Development Alliance is offering two new programs in Barry County for local entrepreneurs and small business owners. The programs, offered in partnership with the Barry County Chamber of Commerce and the Entrepreneur Pillar of the HomeTown Partnership initiative through the Barry Community Foundation, are dubbed NewVenture and GrowthVenture.

"NewVenture is designed to meet the specific needs of entrepreneurs in bringing life to a new idea," said Valerie Byrnes, Barry County Chamber of Commerce and Economic Development Alliance President. "The road to successful entrepreneurship begins with passion about an idea, a business plan based on research and analysis, and the persistence to pursue the vision. Whether you have always dreamed of being an entrepreneur or tight economic circumstances triggered more thoughts about starting a business, NewVenture is designed to introduce entrepreneurs to the key elements of starting a business."

Program participants will develop their business concept through each step of the process. Through reading, research, activities and action steps, entrepreneurs will plan and analyze their vision by creating a thoroughly researched and tested business plan.

"GrowthVenture is focused on helping small business owners sharpen their strategic thinking skills in order to grow and build sustainable businesses," said Byrnes. "Business owners will develop an overall business strategy for growth and structure operations for improved efficiency."

Byrnes said this course is designed to help small business owners plan for financial needs to avoid cash-flow problems with a focus on achieving a strong, competitive market position.

Both programs offer non-traditional, experience-based learning with hands-on coaching sessions. Opportunities to network and learn from peers as well

as the facilitator, business consultants, and guest speakers are a key part of the experience. Speakers will be seasoned entrepreneurs and SCORE business counselors who work with entrepreneurs. Both programs will be facilitated by FastTrac certified instructors through the Michigan Small Business and Technology Development Center.

The programs are 10 weeks long and will begin in mid-February. Cost of the programs will be offset for all participants through grants from the Department of Labor and Economic Growth as part of a Workforce Innovations in Regional Economic Development initiative. Byrnes said the standard fee for each of these programs is \$700 per person. Grant funding will allow the Alliance to offer NewVenture at \$150 per participant and GrowthVenture for \$250 per participant.

The E-Pillar is currently developing criteria for program participants to compete in a business plan contest

upon completion of the course, with awards yet to be determined.

To register for this program or for additional information, call Byrnes at 269-945-2454 or e-mail her at Valerie@barrychamber.com

Information also is available at www.barrychamber.com.

Anyone unable to attend these programs who might benefit from business counseling to develop a new business idea or improve current

operations may call the Barry County SCORE office at 269-945-2454 to schedule a free, confidential business counseling session with a professional SCORE counselor.

Caldwell participates in CMU production of 'Kiss Me, Kate'



Chris Caldwell, shown here in a local production of "Guys and Dolls" recently took part in Central Michigan University's "Kiss Me, Kate."

Maple Valley 2008 graduate Chris Caldwell took part in a production of "Kiss Me, Kate" as part of Central Michigan University Theatre's fall 2008 season.

The son of Robert and Shawn Caldwell of Nashville, Caldwell was part of the men's ensemble in the show. He is majoring in music theater.

Caldwell, also a Maple Valley Marching Band drum major, took part in productions both at Maple Valley High School and with the Revue theater group.

"He was a delight to work with," said Pat Campion who both directed and shared the stage with Caldwell in performances at The Revue. "He is very creative and took direction very well. I'm so glad he is continuing to be on stage."

"Kiss Me, Kate," a Tony Award-winning musical comedy by Sam and Bella Spewack with music and

lyrics by Cole Porter, chronicles the relationships of two couples who are part of a traveling theater company performing Shakespeare's "The Taming of the Shrew." The couples, on- and off-stage lives share a striking resemblance as they work through life's blunders.

The production, CMU's annual musical for the 2008-09 academic year, was a collaborative effort between University Theatre and the School of Music.

The spring 2009 University Theatre schedule features "Dublin Carol," "To Fool the Eye," the world premiere of a commissioned, as-yet-untitled play for young audiences by Max Bush, and the annual spring Orchestral dance concert. For more information, including times, locations and ticketing details, visit www.cda.cmich.edu/ut.htm.

SCHOOL BOARD, continued from page 1 —

and the matter was added to the agenda under new business for discussion and possible board action.

During the discussion prior to the vote Curtis said that the decision to eliminate a part-time curriculum director, "didn't feel right."

"I was concerned from the start when we cut this position. What message are we sending when we continue arts and sports ... we're still here to educate kids," he said.

"I have to ask what we are going to cut instead; we've barely scratched the surface with the budget cuts," said Burd.

Kramer responded that over the course of this school year and the next, he hoped to recoup the cost of keeping Swartz on staff through teachers and other staff retiring or taking "early outs."

"I would rather cut other programs than I would cut curriculum because when you start cutting curriculum, it's our kids that lose in the long run," he said.

"The cost (of keeping

Swartz on staff) is just a little more than the junior high sports program, which I proposed cutting," said Burd.

"I would rather cut teachers than a curriculum director," said Rost. "But, like Tim, the bottom line is money, and I'd like to see another cut somewhere else."

Kramer said the locally hired computer technician resigned after his hours were reduced in a budget cut approved by the board in November, and the \$10,000 savings from that resignation would cover about half of the cost of Swartz remaining on staff for the rest of the year.

Burd suggested that funds from the sale of a forest owned by the school district could be used to defray the cost of keeping Swartz on the payroll.

Kramer said the district could use the funds from the sale of the forest, "anyway it sees fit."

The motion to reinstate Swartz was made by Curtis and seconded by Montgomery.

In other business the board of education:

- Elected the following officers and representatives: Allen, president; Heinze, vice president; Montgomery, secretary; Burd, treasurer; Rost, legislative representative for the Michigan Association of School Boards; Montgomery, representative to the Maple Valley Memorial Scholarship Foundation Board of Directors; Curtis, representative to the Eaton County School Board Association; Rost, district school improvement representative.

Accepted the following

committee assignments: labor and finance, Burd, Heinze and Montgomery; physical facilities, Allen, Burd and Curtis; school and community, Heinze, Montgomery, and Rost; fact-finding, Allen and Heinze; labor relations, Curtis and Montgomery; and athletics, Heinze and Rost.

- Set 7 p.m. on the second Monday of each month in the board room of the Maple Valley administration office as the time, date and place for the regular board of education meetings in 2009. The only exception is in April when the meeting will be held on the third Monday, April 20, due to spring break.

- Approved motions to continued memberships in the Michigan Association of School Boards and the School Equity Caucus for the 2008-09 school year and authorize the following business arrangements: Hastings City Bank, bank of deposit; Kim Kramer, Daryl Sydoski, Lorraine Hansbarger and Debbie Behdel to sign checks; 55 cents per mile as the IRS mileage rate for use of personal vehicles; Yeo and Yeo as district auditors, and Thru Law Firm PC as the district's legal counsel.

- Approved the consent agenda, heard or received reports from building principals, the athletic director, business manager, transportation, superintendent, operations supervisor as well as committee reports.

- Unanimously approved a resolution to participate in the Great Start Readiness Program for 2008-09 school year, accepting 32 half-day slots at \$3,400 per student for a total allocation of \$108,800.

HASTINGS 4

www.GQT.com
269-205-4900

Rocking Seats • All Digital Sound

\$4.25 to \$4.75 ALL SEATS

except adult evening

Stadium Seating • No passes

SHOWTIMES 1/16 - 1/22

HOTEL FOR DOGS (PG)
 SAT/SUN/TUE 12:25, 2:50, 5:00, 7:10, 9:20
 FRI/MON/WED/TH 5:00, 7:10, 9:20

PAUL BLART: MALL COP (PG)
 SAT/SUN/TUE 12:15, 2:25, 4:40, 6:40, 9:00
 FRI/MON/WED/TH 4:40, 6:40, 9:00

BRIDE WARS (PG)
 SAT/SUN/TUE 12:35, 2:40, 4:50, 7:00, 9:10
 FRI/MON/WED/TH 4:50, 7:00, 9:10

BEDTIME STORIES (PG)
 SAT/SUN/TUE 12:00, 2:15, 4:30
 FRI/MON/WED/TH 4:30

MARLEY & ME (PG) DAILY 6:50, 9:30

FREQUENT MOVIEGOERS

Sign up at www.gqt.com for the Frequent Moviegoer Club. Earn points & see movies for a bargain price.

The Revue presents
A Night in Vegas featuring

Forever BRAD

Last time EVER in Vermontville!

Limited Seating! Don't miss it!

Friday & Saturday **Sunday**
 January 23, 24, 30, & 31 January 25 & February 1
 7:00 p.m. 3:00 p.m.

At the Historic
 ~ Vermontville Opera House ~
 211 S Main St

**Table Seating with
Dessert & Beverage
Service***

\$12/person

* Tables assigned in advance.

**General Admission
Balcony Seating**

**\$8 Adults, \$7 Students/
Seniors, \$5 Children
(Ages 5-12)**

Reservations Recommended!

Call 517-285-4037 or email therevue1@yahoo.com

Made possible with the support of:

and
 Arts Council of Greater Lansing, Inc.

Calley plans workshop on appealing property tax assessments

Barry County residents who are fed up with high property taxes are encouraged to attend a workshop Thursday, Feb. 5, sponsored by Rep. Brian Calley on how to appeal tax assessments.

The meeting will take place at the Ever After Banquet Hall, 1230 N. Michigan Ave., in Hastings, and will start at 7 p.m. Calley has sponsored several tax assessment workshops

during the past two years.

"Michigan homeowners have an inherent right to appeal their tax assessment if they feel they are being unfairly assessed," said Calley.

R-Portland. "Unfortunately, many people don't realize this right exists or are unfamiliar with how to challenge (their) taxes. I'll take residents through the step-by-step process on how to file

an effective appeal."

Calley will answer questions from residents and explain the process of appealing tax assessments. He also will invite local tax assessors to the workshop.

For more information about the town hall meeting, residents may contact Rep. Calley at 517-373-0842, or e-mail him at briancalley@house.mi.gov.

Keep meters free of snow and ice for safety

With the recent blast of below-zero temperatures, snow and ice that have hit Michigan, Consumers Energy is again reminding customers to keep safety in mind by making sure their meters are free of ice and snow.

When snow and ice are allowed to build up around outside gas and electric meters, they can become compacted and freeze. This sometimes causes damage to the meter and interferes with its proper operation.

Customers are advised to carefully remove snow by hand from around meters and regulators. Using power snow-removal equipment around these areas is not recommended.

To help ensure the safety of meter readers, customers also are asked to keep their

sidewalks, stairways and gate areas free of snow and ice buildup. For indoor meters, the path leading to the meter should be kept clutter-free and well lit to help spot potential hazards.

A clear path to the meter and a meter that is clearly visible without a build-up of snow and ice will help make meters easier to read and reduce the need for estimating energy use.

"Customers definitely play a key role in helping us to do our jobs safely, and we appreciate their cooperation," said Wayne Lynn, executive manager of customer service for the utility. "The simple things they do to assist us can mean the difference between an injury-free visit and an accident."

SURVEY, continued from page 1

not meant for human habitation, such as cars, parks, sidewalks and abandoned buildings, or those who are sleeping in an emergency shelter as a primary nighttime residence. People may also be considered as homeless if they:

- Are living in transitional or supportive housing for homeless people but originally came from the streets or emergency shelters.
- Ordinarily sleep in transitional or supportive housing for homeless people but are spending a short (30 consecutive days or less) in a hospital or other institution.
- Are being discharged within a week from institutions in which they have been residents for more than 30 consecutive days, no subsequent residences have been identified, and they lack resources and supportive networks needed to obtain

access to housing.

- Are fleeing from domestic violence. No subsequent residences have been identified, and they lack resources and supportive networks needed to obtain access to housing.

The term "homeless person" does not include people who are "doubled up" or "couch surfing," according to the HUD guidelines.

"Please, help us reach those in need and gain a clearer understanding of what needs our residents are experiencing right now," said Boyle.

Correction

In a story that appeared in last week's *Maple Valley News* about Dale Waddle's Quilting From the Heart, the business she created from her passion for quilting, the phone number should have been listed as 517-726-0692.

CALL
269-945-9554
any time for
Action-ads!

Area Obituaries

Stacy R. Picklesimer

NASHVILLE - Stacy R. Picklesimer, age 41, of Nashville passed away Wednesday, January 7, 2009 at Hayes Green Beech Hospital, Charlotte, Eaton County.

Stacy was born in LaPort, IN on December 3, 1967, the daughter of Larry Harshman and Darlena (Picklesimer) Lamb. She was raised in the Nashville area and attended Maple Valley Schools.

She was the wife of Mr. Tony Huss. Tony and Stacy had known each other for the majority of their lives. Their relationship began in High School and grew over the years. Tony and Stacy have been together for over 20 years. They made their home together in the Nashville area where they raised their family together.

Stacy enjoyed crocheting and doing crafts and was an avid collector of unicorn memorabilia.

Stacy is survived by her beloved husband of 20 years

Tony; her two daughters, Alicia and Amanda Huss; two step daughters, Kristy Huss, Angela Huss; five brothers, Larry Picklesimer, Duane Lamb, Mike (Alice Dingna) Harshman, Larry W. (Cathy) Harshman Jr., Steve (Sarah VanCampen) Harshman; her uncle Jim Beard and several other aunts, uncles, nieces and nephews.

Funeral Services will be held at the Daniels Funeral Home, Nashville, at 1 p.m. on Saturday, January 17, with Pastor Deano Lamphere officiating.

The family will receive visitors on Saturday, January 17, one hour before the funeral service beginning at noon.

Memorial Contributions can be made directly to the family of Stacy Picklesimer.

Funeral Arrangements have been entrusted to the Daniels Funeral Home in Nashville.

'PT Live' to perform at Kalamo church

A Saturday Night Special worship service is planned for Jan. 24 at 6 p.m. at the Kalamo United Methodist Church, 1475 S. Ionia Road in Kalamo Township.

A Saturday evening service is held once a month at the church. This service is designed for those who are unable to attend Sunday services due to work schedule or other obligations. This is an informal service, and everyone is invited to attend.

Special music is provided at

these evening services. This month it will be provided by "PT Live," a group of local young people eager to share their God-given talent and sing praises to the Lord.

Sunday worship services will be held as usual at 9 and 10:30 a.m. on Sunday, Jan. 25. The service is broadcast at 9 a.m. every Sunday on 1390 AM.

For more information, call the church at 517-541-1144 or visit the Web page www.kalamochurch.org.

SCHOOL LUNCH MENUS

Elementary Lunch Menu

Monday, Jan. 19

Spaghetti. Whole kernel corn, applesauce, Rice Krispie Treat.

Tuesday, Jan. 20

Hot dog. Baked beans, push-up, cookie.

Wednesday, Jan. 21

Chicken nuggets. Mashed potatoes, grapes, biscuit.

Thursday, Jan. 22

MW Cottage Inn. Pizza. Tossed salad, juice, cookie.

Friday, Jan. 23

No School.

NOTE: Fuller Alternative Entree Choices: Peanut butter and jelly sandwich, honey and peanut butter sandwich.

Maplewood Alternative Entree Choices: 6 oz. Yogurt w/string cheese, chef salad, peanut butter and jelly sandwich. Maplewood offers a variety of healthy snacks for 50 cents each (cash only: quarters or dollars only).

Milk is included with all full meal purchases. Assorted bread choices daily.

Breakfast price: \$1.30; Lunch price: \$1.90; Adult price: \$2.75; milk only: \$.45.

Maple Valley Jr.-Sr. High School Lunch Menu

Monday, Jan. 19

Chicken enchiladas. Refried beans, cinnamon apples. Salad bar.

Tuesday, Jan. 20

Variety of Hot Pkts. Whole kernel corn, pineapple. Subway bar.

Wednesday, Jan. 21

Popcorn chicken. Scalloped potatoes, peach cobbler. Hot dog bar.

Thursday, Jan. 22

Kellogg Cottage Inn. Wrap sandwich. Vegetable soup. Mandarin oranges. Mexican bar.

Friday, Jan. 23

No School.

NOTE: Entree's available daily: cheeseburger, variety of chicken sandwiches, pizza, peanut butter and jelly sandwich, fish sandwich, honey and peanut butter sandwich, 6 oz. yogurt w/string cheese.

Side choices available daily: garden salad, juice, fresh fruit. Milk is included with all full meal purchases. Seconds available on vegetables at no additional charge. Assorted bread choices daily.

Breakfast price: \$1.45; Lunch price: \$2.25-\$2.50; Adult prices: \$2.75-\$3.00. Milk only: \$.45.

DANIELS

Funeral Home

"Our Family Serving Yours"

- Nashville's Only Family Owned, Independently Operated Funeral Home
- Fully Staffed Children's Resource Room
- Free Video Tribute • Barrier Free
- Ample Parking • Accommodations Up to 300



(517) 852-9712

9200 E. M-79 Hwy • Nashville

Scott A. Daniels
& Family
Owner/Manager



- Lockouts
- Tire Service
- Accident Recovery
- Long-Haul & Off-Road



Dependable, damage-free towing!

DOBBIN'S (269) **945-0191**

JEFF DOBBIN'S

AUTO SERVICE, INC.

Owner, Jeff Dobbin, ASE Master Technician over 20 years experience



Country Kettle Cafe

113 N. Main
Nashville

517-852-9700

Hours:
Open 7 Days 6AM-8PM

FRIDAY SPECIALS
All You Can Eat Fish (Cox, Perch or Catfish)
All You Can Eat Shrimp

SATURDAY SPECIALS
BBQ Pork Ribs
Fried Chicken

SUNDAY SPECIALS
Swiss Steak
Baked Chicken & Dressing
Ham Steak & Yams

CHECK OUT OUR BREAKFAST SPECIALS & DAILY SPECIALS MON.-FRI.

Nashville's Friendly Family Restaurant with Family Prices!

Kellogg Company announces precautionary hold on cracker packs

Kellogg Company this week announced it has taken the precautionary measure of putting a hold on Austin and Keebler brand toasted peanut butter sandwich crackers, peanut butter and jelly sandwich crackers, cheese and peanut butter sandwich crackers, and peanut butter-

chocolate sandwich crackers. FDA and other regulatory agencies have indicated that Peanut Corporation of America (PCA) is the focus of their investigation concerning a recent salmonella outbreak thought to be caused by tainted peanut butter. PCA is one of several

peanut paste suppliers that the company uses in its Austin and Keebler brand peanut butter sandwich crackers.

Kellogg Company's investigation has not indicated any concerns, nor has the company received any consumer illness complaints about

these products. Nonetheless, Kellogg is taking precautionary measures including putting a hold on any inventory in its control, removing the product from retail store shelves, and encouraging customers and consumers to hold and not eat these products until regu-

latory officials complete their investigation of PCA and Kellogg provides further information on the resolution of this issue. "Consumer health and safety is our top priority," said David Mackay, president and CEO, Kellogg Company. "We are taking these volun-

tary actions out of an abundance of caution." While no additional consumer action is necessary at this time, consumers with questions or who would like a product refund may call the Kellogg Consumer Response Center at 888-314-2060.

HOMETOWN LUMBER & HARDWARE

219 S. State St., Nashville, MI
852-0882
 Monday-Saturday 7:30 am to 5:30 pm
www.hometownlumber.com

Jack & Judy's

Country Kettle Cafe
 Nashville's Friendly Family Restaurant with Family Prices!
113 N. Main, Nashville (517) 852-9700
 HOURS: Open 7 Days 6am to 8pm

WOLEVER'S Real Estate

Elsie E. Wolver Broker
 Res. (517) 726-0637
135 Washington P.O. Box 95 Vermontville, MI 49096-0095

Transforming the Ordinary Into the Extraordinary

Sometimes, we travel through life so quickly that we don't notice how extraordinary the world really is. At 60 miles per hour, we certainly won't notice the roses, let alone smell them. Likewise in life, if we are hurrying from one frenetic task to another, we simply won't have the time or energy to appreciate the joys and wonders of life. We should slow down and savor our food. The next time we are having a conversation with someone, we should try to be fully present with them and then notice how much richer the experience can be. Instead of multitasking, we should be fully present and aware while doing only one thing at a time. Better to do one thing right than to botch two things simultaneously. Part of transforming the ordinary into the extraordinary is about slowing down, but it is equally important to see the world with new eyes. Our ordinary way of seeing can also be a way of not seeing. That is, perception allows certain things to enter our minds at the same time that it filters out others. What we notice is often determined by our current needs or by what we are doing at the time. For example, if we are hungry, we are more likely to see the restaurants as we drive down the road. To see the world with fresh eyes, we can start by slowing down and really noticing things. We should strive to regain the wonder of experiencing life like a child, as if for the first time, because in reality, each day, indeed each instant, is a new creation.

For with You is the fountain of life; In Your light we see light.
 New K.J.V. Psalm 36:9

SHIRLEYS CHUCKWAGON CAFE
 202 N. Main St., Nashville, MI 49073
 Sun.-Thurs. 6 am-2 pm; Fri. & Sat. 6 am-8 pm
517-852-2500
HAPPY TRAILS...
 THE GARDNERS: SHIRLEY AND RICHARD

Low-priced prescriptions, great coffee & relaxing massage. We'll help you feel better!
Maple Valley pharmacy.
 regular hours • Mon-Fri 9-6 • Sat 9-1
 219 N. Main • Nashville
517.852.0845 • toll free 877.852.2601 • fax 517.852.0461
www.maplevalleryrx.com
 the bean counter MVP massage therapy

HELP SUPPORT OUR LOCAL CHURCHES... ADVERTISE IN THIS SPACE!
 Call **945-9554**
 Ask for our Sales Dept.

LOCAL CHURCH SCHEDULE

ABUNDANT GRACE WORLD OUTREACH CENTER
 Come as you are but don't leave the same.
 Meet at Kalamo Twp. Hall 8960 Spore Ave. Vermontville, MI 49096
 Morning Service 10:30 a.m.
 Evening Service (Every 1st & 3rd Sunday) 6 p.m.
REV. DAWN GOODMAN
 Contact numbers: (517) 852-0896 or (517) 852-9606, leave message

ABUNDANT LIFE FELLOWSHIP MINISTRIES
 A Spirit-filled Church
 Meeting at the Maple Leaf Grange Hwy. M-66 south of Assyria Rd. Nashville, MI 49073
 Sun. Praise & Worship 10:30 a.m., 6:00 p.m.; Wed. 6:30 p.m. Jesus Club for boys & girls ages 4-12. Pastors David & Rose MacDonald. An oasis of God's love. "Where Everyone is Someone Special." For information call 1-616-731-5194 or 1-517-852-1806.

ASSEMBLY OF GOD CHURCH
 803 Reed St., Nashville
 Sunday School 10 a.m.
 Sunday: A.M. Worship 11 a.m.
 Evening Worship 6 p.m.
 Wednesday Evening: Prayer Meeting 7 p.m.
PASTOR GLENN BRANHAM

BASELINE UNITED METHODIST CHURCH
 9617 E. Baseline Rd. Corner of Baseline & Church Roads (2 miles east of M-66 on Baseline)
 Church Service 9 a.m.
 Sunday School 10:30 a.m.
 Youth Groups, Bible Study and many other activities.
 Phone (616) 963-7710
MINISTER: VIRGINIA HELLER

CHURCH OF THE NAZARENE
 301 Fuller St., Nashville
 Sunday School 9:45 a.m.
 Sunday: A.M. Worship 11 a.m.
 P.M. Worship 6 p.m.
 Wednesday Evening: Worship 7 p.m.
REV. ALAN METTLER

CHESTER GOSPEL CHURCH
 3744 W. Vermontville Hwy.
 Sunday School 9:45 a.m.
 Morning Worship 11 a.m.
 Evening Worship 6 p.m.
 Wednesday Family Night Service 6:45 p.m.
PASTOR MARC S. LIVINGSTON
 Phone: 543-5488

FIRST CONGREGATIONAL CHURCH OF VERMONTVILLE
 110 S. Main St. Vermontville, MI 49096
 (517) 726-0258
PASTOR: ISRAEL (IZZY) YOUNG
 Wed. 5:30 p.m. Family Supper
 6:00-7:15 Pioneer Club
 Sun: 9:00 Sunday School
 10:00 Church Service
 11:00 Fellowship

GRACE COMMUNITY CHURCH
 8950 East M-79 Highway, Nashville
 Morning Celebration 10 a.m.
 Contemporary Service, Relevant Practical Teaching, Nursery, Children's Classes, Youth Group, Adult Small Groups, Leadership Training
PASTOR: DON ROSCOE
 Phone: (517) 852-1783
 e-mail: grace@gc3.org

GRESHAM UNITED METHODIST CHURCH
 5505 North Mulliken Road, Charlotte one mile north of Vermontville Hwy.
PASTOR KATHY SMITH
 517-726-0526
 Sunday Morning Worship: 9:30 a.m.
 Children's Sunday School: 9:30 a.m.
 Adult Sunday School: 10:50 a.m.
 Weekly Bible Studies
 United Methodist Women: 3rd Thursday

KALAMO UNITED METHODIST CHURCH
 Worship Services 9:00 & 10:30 a.m.
 Sunday School for All Ages 10:30 a.m.
PASTOR BRYCE FEIGNER
 517-541-1144

MAPLE GROVE BIBLE CHURCH
 8593 Cloverdale Road (1/2 mile East of M-66, 5 mi. south of Nashville)
 Sunday School 10 a.m.
 A.M. Service 11:15 a.m.
 P.M. Service 6 p.m.
PASTOR GEORGE GAY

NASHVILLE BAPTIST CHURCH
 304 Phillips St., Nashville
 Sunday School 9:45 a.m.
 A.M. Service 11 a.m.
 P.M. Service 7 p.m.
 Wed. Service 7 p.m.
PASTOR LESTER DeGROOT
PASTOR DEANO LAMPHERE
PASTOR MATT ROHDE

NASHVILLE UNITED METHODIST CHURCH
 Located on the corner of State and Washington streets
 Worship Service 9:30 a.m.
 Sunday School 11:15 a.m.
PASTOR CATHY CHRISTMAN
 At Home: 852-0685
 Church Phone: 852-2043

PEACE UNITED METHODIST CHURCH OF BARRYVILLE
 6043 E. M-79 Highway, 4 miles west of Nashville (cor. M-79 & Barryville Rd.)
 Sunday Worship 8:30 a.m.
 Other: Prayer Walk, U.M. Women, Bible Study, Mission Projects & more.
PASTOR SUSAN OLSEN
 Phone 517-852-1993
 IGNITING MINISTRY
 Open Hearts—Open Minds—Open Doors

QUIMBY UNITED METHODIST CHURCH
 M-79 West
 Sunday School 10 a.m.
 Worship 11 a.m.
PASTOR KENNETH VAUGHT
 (616) 945-9392

ST. ANDREW & MATTHIAS INDEPENDENT ANGLICAN CHURCH
 2415 McCann Road
 Sunday Services: 9:15 a.m. Morning Prayer 11:00 a.m. Holy Communion
 For more information call: 795-2370 or Rt. Rev. David Hustwick 948-9327
 Traditional 1928 Book of Common Prayer used for all services.
RT. REV. DAVID HUSTWICK

SOUTH KALAMO CHURCH
 Corner of Kalamo Highway & Ionia Rd.
 Sunday A.M. Worship 10:30 a.m.
 Evening Worship 6 p.m.
 Wednesday Evening at 6 p.m.:
PASTOR JEFF SWIFT
 (517) 852-9154

ST. CYRIL'S CATHOLIC CHURCH
 IGNITING MINISTRY
 203 N. State, Nashville
 Sunday Mass 9:45 a.m.
FATHER AL RUSSELL
 A mission of St. Rose Catholic Church, Hastings

VERMONTVILLE BIBLE CHURCH
 250 N. Main St., Vermontville
 Sunday School 9:45 a.m.
 Worship Service 11 a.m.
 Sunday Evening Service 6 p.m.
 Wed. Evening Service 6:30 p.m.
AWANA 6:30-8 p.m. Wed.
PASTOR DANIEL E. SMITH

VERMONTVILLE UNITED METHODIST CHURCH
 108 North Main, Vermontville
PASTOR KATHY SMITH
 517-726-0526
 Adult and Youth Sunday School: 9:30 a.m.
 Sunday Morning Worship: 11:00 a.m.
 Weekly Bible Studies
 United Methodist Women: 2nd Tuesday

Cervical cancer is easily preventable

No woman should die from cervical cancer. If detected early, deaths from cervical cancer can be prevented through appropriate treatment.

In the United States, screening programs have

greatly reduced deaths from cervical cancer. Still, it is estimated that about 10,000 American women will be diagnosed this year with invasive cervical cancer, and more than 50,000

will be diagnosed with early onset cervical cancer.

The good news is that women have the power to reduce their chances of getting cervical cancer. By undergoing routine Pap screening tests, this devastating disease can be detected and treated early.

The cervix is the cone-shaped part of the uterus that connects the upper part of the uterus (womb) and the vagina. Cervical cancer develops when abnormal cells in the lining of the cervix begin to multiply out of control. Cervical cancer is almost always caused by a common sexually transmitted infection called human Papillomavirus, or HPV. HPV is spread through genital sexual contact. Many people who become infected do not have symptoms and unknowingly spread the virus.

According to the Centers for Disease Control and Prevention, approximately 20 mil-

lion Americans are currently infected with HPV, and another 6.2 million people become newly infected each year. At least 50 percent of sexually active men and women acquire genital HPV infection at some point in their lives.

Additional risk factors include smoking (smoking can double a woman's chance of developing cervical cancer), HIV infection, chlamydia infection, not having regular Pap tests and even a diet low in fruits and vegetables.

There are more than 100 types of HPV, and not all of them cause health problems. Some kinds of HPV may cause genital warts or cervical cancer. A person can reduce his or her risk of infection by:

- Abstaining from sexual activity.
- Staying in a long-term, mutually monogamous relationship with an uninfected partner.
- Limiting the number of sexual partners.
- Getting the HPV vaccination.

It is not known to what extent condoms protect against HPV. Areas not

covered by a condom can be exposed to the virus. However, condoms may reduce the risk of genital warts and cervical cancer if used correctly.

In June 2006, the Food and Drug Administration (FDA) approved an HPV vaccine. This vaccine protects against four types of HPV that cause 70 percent of all cervical cancers and 90 percent of all genital warts. The HPV vaccine is recommended for young women between the ages of 9 and 26. The vaccine is given through a series of three shots over a six-month period. The most common side effect is brief soreness at the injection site.

To learn more about the HPV vaccine, contact a doctor or the Barry-Eaton District Health Department immunization program at 269-945-9516 ext. 129.

According to the American Cancer Society, women whose HPV-related cervical abnormalities are detected and treated early - at the pre-cancerous state - have a nearly 100 percent survival rate. Not

many other cancer fighters can claim such success. The key to prevention and early detection is the Pap screening test. A Pap-screening test (often called a Pap smear) is a simple test that can detect changes in the cells in and around the cervix. Yearly Pap screening should start within three years after the onset of vaginal intercourse and no later than age 21.

The Barry-Eaton District Health Department offers two programs to women who qualify. The Breast and Cervical Cancer Control Program (BCCCP) offers free mammograms and Pap smears to women over the age of 40 who are eligible.

The Family Planning Program provides birth control, pelvic exams, Pap smears, clinical breast exams, pregnancy testing, female health education, and STD counseling, testing and treatment to women who qualify. Call 269-945-9516 ext. 4 for the Hastings office for more information.

For Sale

CHILDREN'S PORTRAITS: PICTURE THIS PHOTOGRAPHY IS NOW OPEN EVERY FRIDAY FROM 9:00AM-4:00PM. CALL TO SCHEDULE AN APPOINTMENT (269)948-4669 WALK INS WELCOMED 1310 1/2 STATE ST., HASTINGS. NEXT TO NBT EMBROIDERY

FIREWOOD: \$35 A face cord. (517)726-0741

FRAMES AND CUSTOM matte cutting. By appointment only. Call Picture This Photography. (269)948-4669 www.dgpicturethisphotography.com

SPORTS ACTION PHOTOS online at dgpicturethisphotography.com Picture This Photography, Dan Gogins (269)948-4669

For Rent

NASHVILLE: 2 BEDROOM trailer, (517)852-9386.

Lost & Found

LOST: JANUARY 1ST Shaggy black Cocker Spaniel, Camouflage collar, 2 years old. Lost in Castleton Twp. Call (269)719-7403 or (269)317-0612

Business Services

CHILDREN'S PORTRAITS: PICTURE THIS PHOTOGRAPHY IS NOW OPEN EVERY FRIDAY FROM 9:00AM-4:00PM. CALL TO SCHEDULE AN APPOINTMENT (269)948-4669 WALK INS WELCOMED 1310 1/2 STATE ST., HASTINGS. NEXT TO NBT EMBROIDERY

FRAMES AND CUSTOM matte cutting. By appointment only. Call Picture This Photography. (269)948-4669 www.dgpicturethisphotography.com

Help Wanted

ACCOUNT REP NEEDED: to work on behalf of our company, 18yrs or above needed. Must have computer skills, any job experience needed. email waltergeorge555@gmail.com for more info.

RICHARD RETTELLE OF Spritland Training Center of Northville, Michigan is looking for stable attendant. Exercise, rider/trainer. 4 years experience needed in breaking and training of sale and race horses. Temporary position from 2/28/09-11/28/09. Tools and equipment provided, work guaranteed for 75% of contract period. Housing provided if outside commuting area. Transportation reimbursement to work site paid by employer at completion of 50% of work contract. \$10.05 hourly. Apply for job at nearest Michigan Department of Labor and Economic Growth office. Use job #2763905. (517)266-5678.

Farm

E.A.R.T.H. - EDUCATED ANIMAL Rescue and Teen Haven is in urgent need of HAY DONATIONS. We will come pick it up, clean out your barn of old hay - (Any type of hay that isn't moldy). E.A.R.T.H. 501(c)3 is a non-profit organization. All donations are tax deductible. PLEASE CALL (269)962-2015

Sporting Goods

SPORTS ACTION PHOTOS online at dgpicturethisphotography.com Picture This Photography, Dan Gogins (269)948-4669

LEGAL NOTICE

THIS FIRM IS A DEBT COLLECTOR ATTEMPTING TO COLLECT A DEBT. ANY INFORMATION WE OBTAIN WILL BE USED FOR THAT PURPOSE. PLEASE CONTACT OUR OFFICE AT THE NUMBER BELOW IF YOU ARE IN ACTIVE MILITARY DUTY. MORTGAGE SALE - Default has been made in the conditions of a mortgage made by Karen K. Nicholson and Robert L. Nicholson, married, to Washtenaw Mortgage Company, Mortgagee, dated June 4, 2001 and recorded June 18, 2001 in Instrument Number 1061652, Barry County Records, Michigan. Said mortgage is now held by Chase Home Finance LLC by assignment. There is claimed to be due at the date hereof the sum of Thirty-Nine Thousand Eight Hundred Ninety-Six and 13/100 Dollars (\$39,896.13) including interest at 7.5% per annum. Under the power of sale contained in said mortgage and the statute in such case made and provided, notice is hereby given that said mortgage will be foreclosed by a sale of the mortgaged premises, or some part of them, at public vendue at the Barry County Courthouse in Hastings in Barry County, Michigan at 1:00 p.m. on FEBRUARY 12, 2009. Said premises are located in the Village of Hastings, Barry County, Michigan, and are described as: The South 1/2 of Lots 714 and 715, except the North 11 feet of said Lots, being in the City, formerly Village of Hastings, Barry County, Michigan, according to the recorded Plat thereof. The redemption period shall be 6 months from the date of such sale, unless determined abandoned in accordance with MCLA 600.3241a, in which case the redemption period shall be 30 days from the date of such sale. TO ALL PURCHASERS: The foreclosing mortgagee can rescind the sale. In that event, your damages, if any, are limited solely to the return of the bid amount tendered at sale, plus interest. Dated: January 10, 2009 Orlans Associates, P.C. Attorneys for Servicer P.O. Box 5041 Troy, MI 48007-5041 248-502-1400 File No. 310.3800 ASAP# 2965432 01/10/2009, 01/17/2009, 01/24/2009, 01/31/2009 09685451

Group offers cold-weather tips for pet owners

The Barry County Humane Society would like to remind everyone who has pets or livestock that the recent severe cold weather is extremely harsh for animals that are kept outside.

Following is information that will help prevent illness or injury of animals.

- Make sure there is open, unfrozen, fresh water available at all times. This could mean changing bowls of water several times each day.
- Outside animals need plenty of fresh, wholesome food each day. In severe cold, consider offering some extra food, since many calories are burned up main-

taining body heat.

- Proper shelter and bedding is critical. Dog houses should be enclosed on three sides, with a minimum-sized opening on the fourth side. The house should be well stocked with dry straw, since towels or blankets will not dry out once they become wet. Dog houses should be sized appropriately for the animal and not be too big.
- Barns and garages that are used as shelter for dogs or cats should have beds or boxes with dry bedding.
- Watch for ice balls in the pads of dogs' feet. Carefully remove.
- Do not trim or shave dogs' fur short in cold

weather. Fur acts as insulation for the dog. If necessary, only trim the fur around the toes to help keep feet clean and dry.

• Keep antifreeze away from all animals. Clean up spills quickly, since this substance is poisonous for any animal.

• If possible, keep dogs and cats inside except for "potty" trips and exercise.

• If a pet gets wet, towel or blow-dry, including the feet and pads.

• Make sure pets are current on shots. If they are not behaving as they usually do, seek advice from a veterinarian.

Janelle's
Tanning, Massage & Salon

Salon Hours:
Mon.-Fri. 9-6 • Sat. 9-5
Evening Appointments Available

Welcomes New Massage Therapist
Dawn Fairfield
Dawns Hours: Tues. 9-6; Thurs. 11-6; Sat. 1-5

Dawn is offering
FREE 5 minute chair massages
Walk-ins Welcome

Hair Specials
Senior Perms **\$30** w/haircut and style
Nail Specials
ManiPedi Combo **\$20**

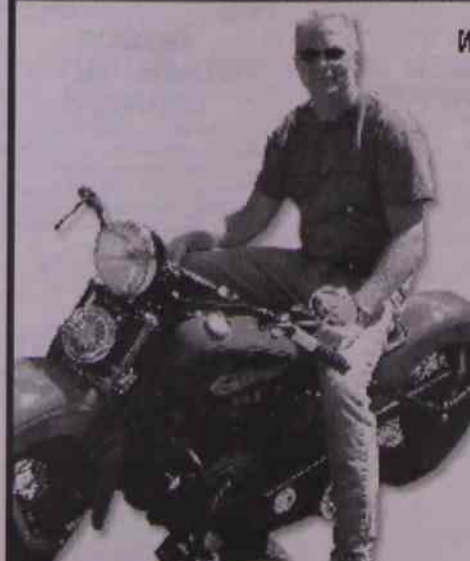
All Tanning Lotions on **CLEARANCE**
all under **\$20**
All specials expire 2-28-09

517-726-1506
150 N. Main, Vermontville

06685942

Why Dan Lives United...

I think it is important to LIVE UNITED. By myself, I feel powerless to those in need but, giving through United Way, my gift reaches so many lives in so many ways!



GIVE. ADVOCATE. VOLUNTEER.

LIVE UNITED

United Way
A Values for Change

Special wedding dress bonds three generations of Nashville women



This composite photo shows (from left) Bernice (Maurer) Frith posing for a photo on her wedding day in 1954, her daughter RoseMary (Frith) Heaton walking down the aisle on her father's arm wearing her mother's wedding dress in 1983; Bernice Frith, wearing her wedding gown, sharing a kiss and dance with her husband, Leon, as they celebrate their 50th wedding anniversary in 2004; Rose Mary's daughter, Kristen Frith, wearing her grandmother's wedding dress in September 2008.

When Bertha McCallister designed and created a wedding dress as a special gift for a young co-worker, she probably never imagined how carefully the dress would be preserved and how many brides would enjoy her creation.

In 1954, Bernice Maurer was planning her wedding while working for the Water Department at Battle Creek City Hall. Her future husband, Leon Frith, worked at Wheeler's City Service Station in Nashville and finished his senior year. It was bittersweet time for both the bride and the groom since neither of their mothers would be at the wedding. Leon had lost his mother when he was 16 years old and Bernice's mother, Gertrude (Lennon) Maurer had passed away during the fall of 1953.

That same fall, McCallister, who was Bernice's boss at the time, watched as the young woman spent her lunch hours walking to Liela Hospital to feed her dying mother and walking back to work.

Bertha had once had dreams of being a fashion designer, and Marshall Fields in Chicago had offered her a job. But family obligations kept her in Battle Creek. As a wedding present, McCallister offered to design and make a wedding and a maid of honor dress for Bernice.

Bernice gave McCallister \$40 to cover the cost of the satin and tulle for both dresses. When one of Bernice's granddaughters recently asked her if she had

specified what style of dress she wanted, she replied, "No, I just told her I wanted a wedding dress!"

Bernice said the wedding gown was well made and designed beautifully. She was thrilled; the dresses were better than she had ever dreamed, she said.

Bernice and Leon were wed at St. Cyril Catholic Church in Nashville on May 29, 1954. The dress was put away as the couple continued to work and raised four daughters, Cindy, LuAnn, RoseMary and Michelle. The girls would pull the dress out from time to time as they dreamed of their own wedding days.

When Rosemary was planning her wedding in 1983, she was thrilled when Bernice said, "I always dreamed that one of my girls would wear my wedding dress. I think the size will be close — if it is anything you would want to wear."

RoseMary said she was thrilled and honored and that the dress fit with no alterations. So, the gown made its second appearance as RoseMary wore it when she married David Heaton in her parents' backyard July 23, 1983.

The dress was worn for the third time June 19, 2004, at Leon and Bernice's 50th anniversary celebration. With help from her daughters, Bernice snuck away and put on her wedding gown, so that when the disc jockey called the two out for an anniversary dance,

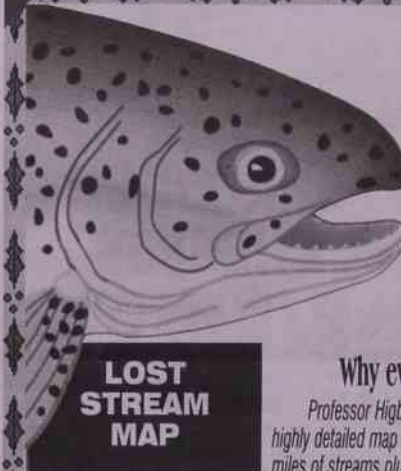
Bernice was able to surprise Leon in front of their family and friends. Fifty years later, the gown still held up and fit with no alterations.

This past September, the dress made its fourth appearance as Leon and Bernice's granddaughter and RoseMary's daughter, Kristen Frith, wore the dress in her wedding to Jedediah Smith. RoseMary had taken the dress to Kristen in Chicago for a fitting. Both Rosemary and Bernice had been certain that at least some small alteration would have to be made; but, once again, the dress fit perfectly.

Torrential rains prevented Kristen and Jedediah from having their wedding outside in the same place where her parents had been wed; however, they were able to hold their ceremony inside the St. Cyril's parish hall, the church where her grandmother had first worn the gown.

In 1954, as she watched Bernice walk down the aisle, McCallister knew she had made one bride very happy. She had no way of knowing that her gifts of time and talent also would be a perfect fit for Bernice's daughter and granddaughter. She also could not have known how proud and blessed her gift would make two mothers on their daughter's wedding days.

GREAT GIFT!



Locate More & Bigger Fish with the Stream & Lake Map of Michigan

Why every angler and boater needs this map

Professor Higbee's Stream & Lake Map of Michigan is the first and only highly detailed map of its kind. The 4-foot-by-4-foot Michigan map shows 35,000 miles of streams plus lakes.

For a limited time -- get 3 bonuses with each map

LOST STREAM MAP

The STREAM & LAKE MAP OF MICHIGAN resembles another map--known to Pennsylvania anglers as the "Lost Stream Map."

The "Stream Map of Pennsylvania" was completed in 1965 after a 30 year effort by Howard Higbee, a former Penn State Professor.

Professor Higbee succeeded in creating a map of the highest detail possible...a map that shows every stream and lake. He painstakingly plotted by hand, the location of 45,000 miles of streams onto a 3 by 5 foot map.

The map sold extremely well - until it was lost several years later. Incredibly, the printer entrusted with the original drawing and printing plates declared bankruptcy, then carelessly hauled Higbee's 30 years of work to the landfill.

The few remaining dog-eared copies became a prized fisherman's possession. Professor Higbee was offered \$400 for one of his last maps. And state agencies were forced to keep their copies under lock and key.

The experts had always told Professor Higbee that reprints were impossible, because the maps were printed in non-photographic blue.

Then, in 1991, at the age of 91, Howard Higbee's dream came true. Computers made it possible to reprint the map. Holding an updated map, Howard said, "I never thought I'd live to see this day."

Then, by combining Professor Higbee's knowledge with computer technology -- the STREAM & LAKE MAP OF MICHIGAN was created.

BONUS #1 **GUIDEBOOK:** Pinpoint the best fishing in Michigan with this valuable guide. Easily locate over 5,000 streams and lakes shown on the Stream & Lake Map both alphabetically and geographically. Your map and guidebook will take you to the top 443 select fishing waters--select waters for 14 species of gamefish.

BONUS #2 **REPORT: Finding Secret Fishing Spots** 47 tips, tactics and tools you can use to find your own secret spot and catch more fish.

BONUS #3 **REPORT: How Anglers Stalk and Catch Record Fish** The average big fish has evaded capture for over 10 years. Find out which instincts set them apart from smaller fish. Stalking and catching a trophy requires knowledge of their unique habits and those special times when their guard is down. Armed with the information in this new and exclusive 24-page report--you could be in for the fight of your life.

RAVE REVIEWS

"It is in showing where to find out-of-the-way trout streams that makes the map such a treasure to the fisherman."
 —Joe Gordon, TRIBUNE-DEMOCRAT, Johnstown, PA

"I have one of the original Higbee's Stream Map of Pennsylvania on my wall behind my desk. It's the best thing available as far as streams are concerned. I use it all the time for reference. I don't know of anything more extensive and it is the most accurate map out there as far as streams are concerned."
 —Dave Wolf, PA Fish and Boat Commission

LIMITED TIME OFFER -- 3 BONUSES WITH EACH MAP

SHIPPING INCLUDED -- ORDER TODAY!

Available rolled or folded. ALSO AVAILABLE in heavy gauge LIFETIME GUARANTEED, glass-like clear-lamination, write-on wipe-off surface, with brass eyelets for easy hanging.

Michigan 4 FT by 4 FT Rolled Paper Map(S) PLUS BONUS #1, #2, #3	\$26.95 ea.
Michigan 4 FT by 4 FT Folded Paper Map(S) PLUS BONUS #1, #2, #3	\$26.95 ea.
Michigan 4 FT by 4 FT Laminated Rolled Map(S) PLUS BONUS #1, #2, #3	\$46.95 ea.

Check or money order enclosed \$ _____


EACH ROLLED AND LAMINATED MAP SHIPPED IN A STURDY STORAGE TUBE

Name _____

Address _____

City _____ State _____ Zip _____

Mail To: **J-AD GRAPHICS**
 1351 N. M-43 Hwy.
 P.O. Box 188
 Hastings, MI 49058-0188





j-ad

High Quality Prints in 1 Hour

Film or Digital

PRINTING + PLUS

1 hour rush charge (per 24 prints) **\$2.00**

3 hour service (per 24 prints) **\$6.99**

Get your Quality Digital Prints WHILE-YOU-WAIT!

(Custom effects available)

269-945-9105

1351 N. M-43 Hwy • Hastings

Hours: M-F: 8:30 am - 6:00 pm
Sat: 8:30 am - 1:00 pm

OPEN: 7 DAYS A WEEK 24 HOURS
NASHVILLE IGA EXPRESS

133 S. Main
 Nashville, MI
 517-852-0868

You're In, You're Out...
 You're Home

ONE
 STOP
 SHOPPING

Grocery Store Pricing With Party Store Convenience!

SALE	SUN. JAN. 18	MON. JAN. 19	TUE. JAN. 20	WED. JAN. 21	THUR. JAN. 22	FRI. JAN. 23	SAT. JAN. 24
------	-----------------	-----------------	-----------------	-----------------	------------------	-----------------	-----------------

2% MILK
 Gallon
\$2.99



Frito Lay
MUNCHIES
 8 oz.
2/\$5



Bar-S
SMOKY LINKS
2/\$3.00
 10 oz.

Troyer Stuffed
CHICKEN BREAST
\$1.19
 6 oz.



Banquet Brown & Serve
LINKS & PATTIES
4/\$5.00
 7 oz.

Kraft
SHREDDED CHEESES
2/\$5.00
 8 oz.

8 Lb. Bag
NAVEL ORANGES
\$5.99



3 Lb. Bag
MACINTOSH APPLES
\$2.99



JIF PEANUT BUTTER
\$2.19
 17.3-18 Ounce



IGA GRAPE JUICE
\$2.99
 64 Ounce

Arm & Hammer
LIQUID DETERGENT
\$4.99
 50 oz.



Pepperidge Farms
LAYER CAKES
2/\$6.00
 19.6 oz.



SUBWAY **Caters**
 Party Platters - Cookie Platters - Party Subs
 24-Hour Notice

SUBWAY **Nashville IGA Express Accepts:**
 Mon.-Thur. 6AM-10PM; Fri./Sat. 6AM-Midnight;
 Sun. 9AM-10PM
 MasterCard VISA DISCOVER
 Bridge Cards - WIC

Next Generation Power Force to visit Nashville church

The public is invited to attend when the body builders and former NFL football players of John Jacobs Next Generation

Power Force brings their free demonstrations of strength and power paired with positive messages to Nashville Baptist Church at 7 p.m.

Sunday, Jan. 18. The church is located at 312 Phillips St., Nashville. For more information, call 517-852-9808.

Maple Valley and Lakewood High School students combine for "West Side Story"

Lakewood and Maple Valley high schools are combining their talents for a spring production of the musical "West Side Story."

Because of construction at Lakewood, performances will be at Maple Valley. Show dates are March 5, 6, 7, 12, 13, 14 at 7 p.m. and also March 14 at 3 p.m.

The lead roles of Tony, Maria, Anita and Anybodys were double-cast between each school. On their "off nights," students will play a chorus part so that they will perform in all six shows.

The cast includes (with designations of LW for Lakewood and MV for Maple Valley): Adam Zank playing Riff (MV), Nick Smith (MV) and Mike Kennedy (LW) as Tony, Joe Benedict (MV) in Action, Dale White (MV) as A-Rab, Jerry Grieser (LW) as Baby John, Cody Hale (MV) as Snowboy, Cam Eldridge (MV) as Big Deal, Chris Eldridge (MV) as Diesel, Clint Franklin (MV) as Gee-Tar, Casey Eldridge (MV) as Mouth Piece, Nick Smith (MV) and Mike Kennedy (LW) as Tiger each on their 'non-Tony' nights, Brandon Shapley (LW) as

Bernardo, Lynette King (LW) and Kayla Chapman (MV) as Maria, Brandy McKelvey (MV) and Maria Licari (LW) as Anita, Ian Henretty (LW) as Chino, Saeed Saeed (MV) as Pepe, A.S.M. Shafayatul Alam (MV) as Indio, Matt D. (MV) as Luis, Jessa Cheeseman (MV) as Graziella, Amber Farnum (MV) as Velma, Sarah Buckmaster (LW) as Minnie, Lydia Richards (MV) as Clarice, Holleigh Kennedy (LW) as Pauline, Sheridan Saunders (LW) and Stephanie Schaffer (MV) as Anybodys, Megan Shoemaker (MV) as Rosalia, Sarah Pena (MV) as Consuelo, Chelsea Khouri (MV) as Teresita, Kayla Bite (LW) as Francisca, Amanda Paxson (MV) as Estella, Marisela Martinez (LW) as Margarita, George Van Den Driessche (LW) as Doc, RJ Brown as Schrank, Tyler Ray (LW) as Krupke and Seth Earl (MV) as Gladhand.

Brittany Snook (MV) is a featured singer. Members of the chorus are Heather Kennedy (LW), Andrea Ferrier (MV), Elizabeth Sandula (LW), AJ Kirby (MV), Kelsey Venton (MV), Lindsey Fisher (MV), Chloe Babcock (MV) and Elizabeth Smith (MV).

Co-directors are Ryan Rosin (MV) and Kenneth Smith (LW). The assistant director is Sarah Shoemaker. Smith is also sound director and house manager. Amanda Wells is the music director, costumer and stage manager. Smith is the set designer.

Set construction is by Weston Rooks, Jared Rinckey and Mark Shoemaker. Choreography is by Amanda Wells, Kim Rodriguez and Bill Reynolds. Rosin is directing the pit orchestra. Lighting is by Amy Jo Parish.

Rehearsals will be at both Lakewood and Maple Valley. "West Side Story" features music by Leonard Bernstein and lyrics by Stephen Sondheim based on the book by Arthur Laurents. It opened on Broadway in 1957 and has had several revivals including one in 2009.

The musical is set on Manhattan's west side in the mid-1950s. The plot involves a white gang and a Puerto Rican gang.

Songs include "Something's Coming," "Maria," "America," "Somewhere," "Tonight," "Jet Song," "I Feel Pretty," "One Hand, One Heart" and "Cool."

EWING WELL DRILLING INC.

OFFERING COMPLETE WATER & WELL DRILLING & PUMP

SALES & SERVICE 4" TO 12" WELLS

- Residential
- Commercial
- Farm

We stock a complete line of...

- Pumps • Tanks
- Plastic & Steel Pipe
- Other Well Supplies

WE OWN OUR OWN EQUIPMENT & DO OUR OWN WORK.

Richard Ewing Owner

GRAVEL WELLS A SPECIALTY

Estimates Available



(517) 726-0088
 10076 NASHVILLE HWY.
 VERMONTVILLE

Now accepting MasterCard & Visa

Better Kid Care Workshop set to be held Jan. 22

MSU Extension will host a Better Kid Care Workshop Thursday, Jan. 22, from 6:30 to 8:30 p.m. at the Pennock Hospital conference center

The workshop will cover basic information about safe sleep techniques for infants and how the effects of shak-

ing a baby are unhealthy and extremely dangerous. Prevention of both will be discussed.

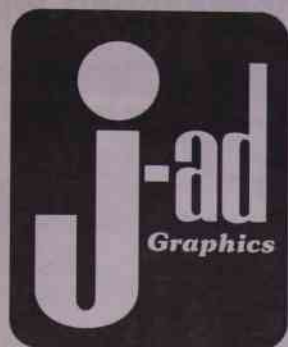
Call MSU Extension at 269-945-1388 or toll free 1-800-258-5440 to register for this free workshop.

Need wedding invitations?

Stop by and check out the large selection at

J-Ad Graphics

1351 N. M-43 Highway,
 Hastings



Looking For a PRINTER?

FULL SERVICE FROM START TO FINISH

The area's most complete printing facility

Call one of our sales professionals today!

- Steve Skedgell • Steve Steward
- Jennie Yonker
- Bruce Fuller • Fred Jacobs
- Brian Rayner- Charlotte Litho
- Jonathan Jacobs- Lowell Litho

SPECIALIZING IN MULTI-COLOR AND 4 COLOR PROCESS WORK WHERE NO JOB IS TOO BIG AND NEVER TOO SMALL!

- Letterheads
- Business Cards
- Annual Reports
- Brochures
- Flyers
- Posters
- Political Signs
- Rubber Stamps
- Business Forms
- Newsletters
- Computer Forms
- Folders
- Books
- Stickers
- Invitations
- Labels
- Tags
- Envelopes
- Tickets
- Balloons
- Calendars
- Catalogs

SERVICING KALAMAZOO, GRAND RAPIDS, BATTLE CREEK, LANSING AND SURROUNDING AREAS DAILY!

- PICK-UP AND DELIVERY
- MAILING SERVICE
- COMPLETE BINDERY
- WEB AND SHEETED OFFSET PRINTING

ONE-HOUR PHOTO PROCESSING



Try our new advanced photo processing system using the latest in digital technology providing you with the highest quality reproduction possible.

We process 35mm Advanced Photo System and 120 film on site.
1 Hour or Next Day Processing

- COLOR COPIES
- COMMERCIAL PRINTING
- INVITATIONS & MORE

Conveniently located near you!

J-Ad Graphics Printing Plus

1351 North M-43 Highway
(just north of city limits)
Hastings, MI 49058-0188
(269) 945-5078

Fax (269) 945-5192

Charlotte Litho

144 S. Cochran
(right on Charlotte's Main Street)
Charlotte, Michigan 48813
(517) 543-4041

Fax (517) 543-2272

Marshall Printing Plus

514 S. Kalamazoo Avenue
Marshall, Michigan 49068
(269) 727-0091

Fax (269) 727-0090

Lowell Litho

105 N. Broadway St.
Lowell, MI 49331

(616) 897-9261

Fax (616) 897-4809

Lions rout Rams for their second conference win

Maple Valley's varsity wrestling team improved to 2-1 in the Kalamazoo Valley Association with a 60-16 win over Galesburg-Augusta Wednesday evening.

The Lions were 2-0 on the night, also scoring a 57-15 non-conference win over Leslie.

At 12 flights, six points were

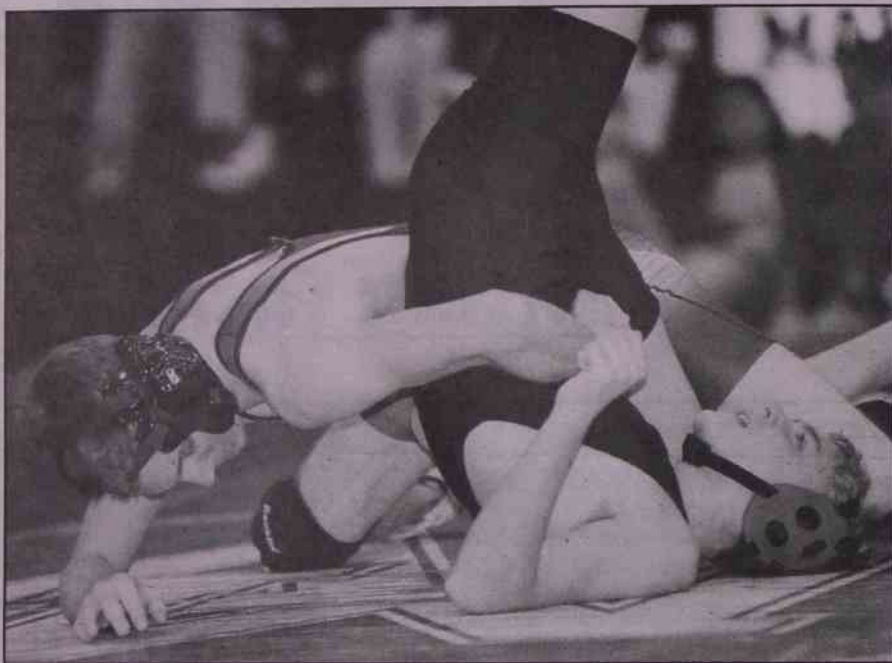
awarded to either the Lions or the Rams in their dual, with five forfeits by the Rams, one flight where both teams forfeited, and there were six pins.

The only match that went six minutes was won by the Rams, as Nathan Carley topped Ryan Brooke in the 189-pound match.

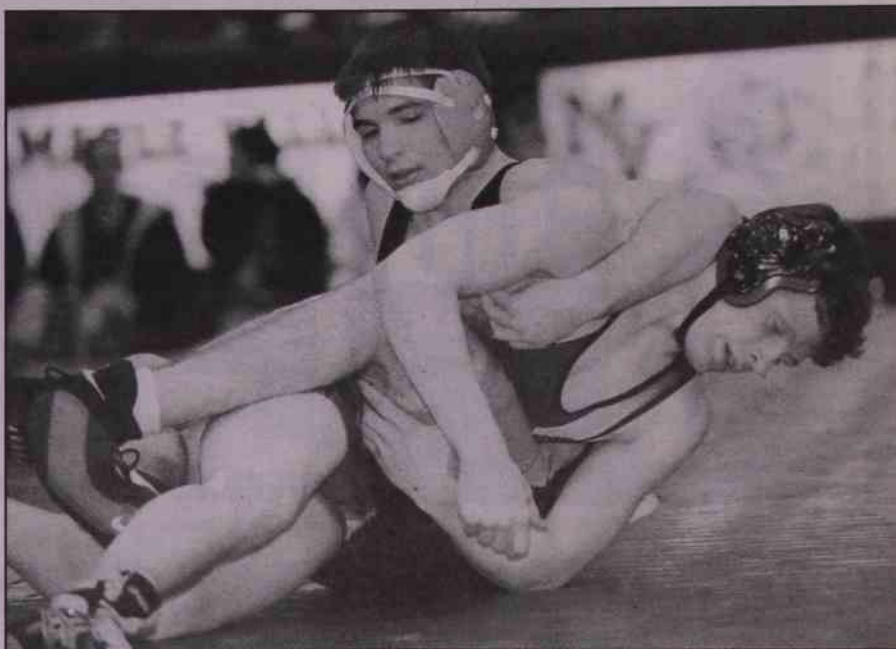
The Lions got pins from

Dusty Cowell (215 pounds), Andrew Zank (160), Josh Fulford (135), and Anthony Molson (112).

Zack Baird (103), Waylon Eaton (125), Lucas Brumm (140), Tyler Franks (145), James Samann (152), and Don Jensen (285) all won by forfeit for Maple Valley.



Maple Valley's Cody Cruttenden (left) nears a pin during the first period against Leslie's Colin Martin Wednesday night. (Photo by Perry Hardin)



The Lions' Tyler Franks (front) works towards a 2-0 win over Leslie's Eric Heath during Wednesday night's dual at Maple Valley High School. (Photo by Perry Hardin)

Both teams forfeited the 119-pound match, and the same thing happened in the Lions' win over the Blackhawks. Molson at 112 and Cowell at 215 earned the only other forfeit wins over Leslie for the Lions.

The Lions got pins from Cody Cruttenden (130), Fulford (135), Brumm (140), Samann (152), Zank (160), Brooke (189), and

Jensen (285). Franks scored a 2-0 win over Eric Heath in the 145-pound bout.

Maple Valley will return to league action at Delton Kellogg next Wednesday night.

Last Saturday, the Lions were 2-3 at the Edwardsburg Invitational.

Cowell was 5-0 on the day at 215 pounds, and earned a gold

medal. Baird at 103 and Brumm at 140 were both 4-1, and earned silvers.

The Lions scored a 50-27 win over Dowagiac and a 55-22 win over White Pigeon. Jimtown topped the Lions 55-18; Sturgis topped the Lions 48-22; and Edwardsburg scored a 49-24 win over Maple Valley.

Maple Valley can't match Parchment's solid shooting

by Brett Bremer
Sports Editor

Keith Jones thought maybe he jinxed his team at the half.

Parchment's varsity boys' basketball team went into half-time with a 40-23 lead, after exploding for 24 points in the second quarter against the Lions Tuesday night.

The Panthers had 24 points in one quarter, but the 23 points in the first half was a

solid number for the Lions who have struggled to put up points this season.

Jones mentioned the decent offensive numbers to his team at the half. After that, the Lions did struggle.

Maple Valley scored just one field goal, and only three points, in the third quarter. Parchment went on to a 70-49 victory.

"We couldn't buy a bas-

ket," said Jones, the Lions' head coach. "It was one of those quarters.

Parchment held just a 16-12 advantage after one quarter.

As a team, the Panthers hit four three-pointers in the second quarter and seven for the night. Austin Cole had four of them, and three came in the second quarter flurry. He finished the night with 14 points.

"Their coach said he hadn't done that all year," said Jones. "Of course he gets hot against us. They just shot the ball real well."

Adrian Pallon led Parchment with 19 points, and Michael Bailey chipped in 12. Parchment had three other players with six points each.

Maple Valley tightened the gap a little bit late in the

game, putting 23 points on the board in the fourth quarter.

Kyle Fisher led the Lions on the night, with 13 points. Jesse Bromley had 12 points, and Dustin Houghton nine to go along with a team high ten rebounds.

The Lions' Friday night contest with Constantine was postponed, and will be made up Feb. 7. Maple Valley

already has one make-up game on the schedule for this coming week, at home against Bellevue Wednesday.

The Lions return to Kalamazoo Valley Association action, where they're 0-4 so far this season, Friday night at Olivet.

Lion ladies lose lead in third, get it back to top Parchment

An 18-6 run in the fourth quarter allowed Maple Valley's varsity girls' basketball team to come back and score a Kalamazoo Valley Association victory over Parchment at home Tuesday night.

The Lions won 46-35, after trailing by one heading into the fourth quarter.

The teams were close all night long. The Lions held a 28-24 edge at the half. Parchment took the lead in the third quarter, putting 16 points on the board.

Tiara Gilliard led Parchment with nine points. Andrya Doorlag chipped in seven points.

Elizabeth Stewart was the only player in double figures for either squad, pumping in 15 points. She knocked down a pair of threes in the contest for Maple Valley.

Leslee Rigelman also hit a pair of threes for the Lions, and finished with eight points. Jordan Beachnau added eight points for the Lions as well, and Jennifer Kent had six.

The Lions' Friday night contest with Constantine was postponed, and has been moved to Feb. 7.

The Lions play a non-conference game at Bellevue this Wednesday. Next Friday night, the Lions will be at Olivet for another KVA contest.

Wanted
Farmland to rent in Kalamazoo and Vermontville Township area's for 2009 crop year and beyond
517-819-2035

Hansbarger
Heating & Air Conditioning
517-490-1287
Vermontville, MI
LICENSED INSURED
COLE HANSBARGER Owner
RUUD
Featuring Ruud Gas Furnaces and Air Conditioners.
Full Line of Indoor Air Quality Products • FREE Estimates

Reach over 4,000 area homes with an ad in the Maple Valley News. Call 269-945-9554 to place your ad.

Now Available!
INTERCERAMIC TILE
Stop by and check out the great selection of ceramic tiles for floors, walls and counters
(* Please allow for a 2-3 day delivery)
HOMETOWN LUMBER & HARDWARE
219 S. State in Nashville
517-852-0882
www.hometownlumber.com
Mon. thru Sat. 7:30 am to 5:30 pm

From Our Readers

Local Citizens Speak Out On Issues

A little honesty could bring better faith

To the editor:

11/11/08

BAIT:

SWITCH:

"Audience member asked how long the EMS could operate at its current level of funding."

"We couldn't get through this coming year. We didn't hold this meeting to scare or threaten people." Maple Valley News - March 8.

"EMS fate lies with Castleton Township voters" Maple Valley News - 11/1/08

"Please do not use information from anyone who is not part of the service, for it is very misleading and inaccurate. Take the time to make an informed decision, one you can live with." Maple Valley News - 11/1/08

"We'd like to, and it's good to have a \$20,000 to \$30,000 fund balance to carry over at the year end." Maple Valley News -

"I'm hoping ... will be able to shed some light on whether this millage (1-mill operating levy for CMGNA) absolves the village and townships from having to make quarterly payments."

"As a village we will still have to make quarterly payments, but they will be a lot lower ...our quarterly payment will be lower, but we won't get off scott-free."

"Why won't we get off scott free?" Maple Valley News - 11/15/08

OBSERVATIONS:

The \$62,726 in taxes approved on election day has started the budgetary process of moving in the front door of CMGNA while support from Castleton Township and Village of Nashville has started moving out the back door to increase operating

funds in these governmental entities for stuff. If the worse case occurs, a total increase of \$18,926 (\$62,726 - 28,800 - 25,000) in operating funds will occur in CMGNA after the dust settles assuming Castleton Township and Village of Nashville pull all their support \$28,800 and \$25,000, respectively. Apparently, the funding crisis in CMGNA disappeared after the votes were counted on election day.

How will this support that was being sent to CMGNA in the past be spent by the governmental entities: salary increases and pension contributions in Castleton Township? Hopefully, they will communicate with the public in the same factual manner as the Maple Valley Board of Education has done recently even though no millage request was pending for the schools. Maybe, the Committee will take out another full page add in the Maple Valley News and provide numbers on the shell game being played because only qualified individuals can comment on ambulance issues. Also, they can stand up and identify themselves so the public understands what axe was being ground by these qualified individuals and whose interest was being served, ours or theirs.

Finally, CMGNA had a fund balance of \$28,233.51 on October 31, 2008 according to the financial report prepared by the treasurer of CMGNA so imminent failure was not a problem just prior to the election even though the public was led to believe otherwise.

Donald M. Wiggins, Nashville

Distance learning and telemedicine grants available

Douglas Faulkner, acting agriculture undersecretary for rural development, has announced that USDA is accepting applications for grants through the Distance Learning and Telemedicine (DLT) Grant Program to provide access to education, training and health care resources in rural areas.

Funding for the program is subject to Congressional appropriations.

"These grants will increase the range of educational opportunities available to students in rural communities and improve access to health care for countless numbers of rural Americans," Faulkner said. "The DLT program provides increased economic opportunity by expanding telecommunications, educational resources and computer networks throughout rural America."

In 2008, USDA Rural Development provided grants totaling \$28.2 million under the program to 105 recipients in 41 states.

Complete applications must be received by March 24. Materials including an application guide and full details about the program can also be obtained at www.usda.gov/rus/telecom/dlt/dlt.htm or by calling the DLT program at 202-720-0413.

USDA Rural Development's mission is to increase economic opportunity and improve the quality of life for rural residents. Further information on rural pro-

grams is available at a site at <http://www.rur-local.usda.gov>. Development office or by visiting USDA's web



Commission on Aging Menu and Schedule of Events

Hearty Menu

Monday, Jan. 19

COA closed in observance of Martin Luther King Jr. birthday. No meal delivery.

Tuesday, Jan. 20

Tuna noodle casserole, succotash, mixed vegetables, diced pears.

Wednesday, Jan. 21

BBQ chicken leg qtr., country potatoes, chopped spinach, jello w/mandarin oranges, whole wheat bread.

Thursday, Jan. 22

Home-style beef stew, Brussels sprouts, fruit compote, biscuit.

Friday, Jan. 23

Ham, au gratin potatoes, broccoli, pineapple tidbits, dinner roll.

Cold Menu

Monday, Jan. 19

COA closed in observance of Martin Luther King Jr. birthday. No meal delivery.

Tuesday, Jan. 20

Cheese cubes, tomato salad, tropical fruit, Ritz crackers.

Wednesday, Jan. 21

Turkey w/Swiss cheese, potato salad, spiced apples, tortilla.

Thursday, Jan. 22

Chef salad, broccoli raisin salad, pineapple tidbits, whole wheat crackers.

Friday, Jan. 23

Chicken salad, macaroni salad, mandarin oranges, whole wheat crackers.

Activities Calendar

Monday, Jan. 19: COA closed in observance of Martin Luther King Jr. birthday. COA closed.

Tuesday, Jan. 20: Hastings - No Pickle Ball; Line Dancing 9:30 a.m. GL - 10:30-12:30 Cards.

Wednesday, Jan. 21: Hastings - Bible Study 12:30 p.m.; Music with Sam; Nails; Euchre 12:30-2:30 p.m. Delton - Remini-science.

Thursday, Jan. 22: Hastings - Line Dancing 9:30 a.m.; Pickle Ball Court available sign up for times. Beading 5 p.m. Nashville - TV Time; Delton - Puzzles, Trivia.

Friday, Jan. 23: Hastings - Exercise 9 a.m.; Mixed Media Painting, 9:30 a.m.; Bingo 10 a.m.; Model Railroad, 10 a.m.-2 p.m. Woodland - Visiting.

Youth wrestlers win 8 medals at Grand Ledge

The Maple Valley Youth Wrestling program earned

eight medals at its first open tournament of the season, at Grand Ledge last Sunday.

Christian Schrader and Jesse Brumm both earned first place in their weight classes. Garrett Pearson and Derek Dickson were second.

Third place medallists from Maple Valley were Chandler Murton and Travis Franks. Fourth place went to Wyatt Baird and Dillon Terpening.

Donald M. Wiggins, Nashville

PUBLISHER'S NOTICE:

All real estate advertising in this newspaper is subject to the Fair Housing Act and the Michigan Civil Rights Act which collectively make it illegal to advertise "any preference, limitation or discrimination based on race, color, religion, sex, handicap, familial status, national origin, age or marital status, or an intention, to make any such preference, limitation or discrimination." Familial status includes children under the age of 18 living with parents or legal custodians, pregnant women and people securing custody of children under 18.

This newspaper will not knowingly accept any advertising for real estate which is in violation of the law. Our readers are hereby informed that all dwellings advertised in this newspaper are available on an equal opportunity basis. To report discrimination call the Fair Housing Center at 616-451-2980. The HUD toll-free telephone number for the hearing impaired is 1-800-927-9275.



06602644

Call 269-945-9554 for Maple Valley ACTION-Ads Reach over 4,000 area homes

GREEN LIGHT DRIVING SCHOOL LLC
301 N. Main (M-66), Nashville • 517-852-0000

Segment 1 \$285 Jan. 26-Feb. 12 Feb. 23-March 12
Segment 2 \$40 Feb. 16-Feb. 18 March 16-18

Payment Plan Available
Free Parent Meeting: Jan. 24 @ 9am

We partner with parents for SAFE teen drivers!!
www.greenlightdriving.net

COBB WELL DRILLING & REPAIR

- 7 Day Service
- Pumps Installed & Repaired
- Service On Submersible Pumps
- 2" - 5" Well Drilling and Repair

30 Years Experience
Estimates Available
517-726-0377
356 N. Pease Rd., Vermontville
Richard Cobb
David Cobb
MI Lic. #1746

FROST HEATING & COOLING
QUALITY, VALUE & SERVICE

- New Construction Designed and Installed
- Boiler Service and Installation
- Radiant Floor and Ceiling Installation
- Duct Cleaning and Sanitizing
- Complete Air Conditioning Service and Installation
- Tankless Water Heater Sales and Service
- 24 Hour Phone Service
- Free Estimates

HEAT
HEATING & COOLING PRODUCTS

GEOTHERMAL INSTALLATION & SERVICE
Lake Odessa (616) 374-7595 Nashville (517) 852-9565

No round three hurts Valley at their first league jamboree

Maple Valley got off to a good start at the first ever Southern Michigan Competitive Cheer Conference jamboree.

The Lions were in fourth place heading into the third and final round, but didn't compete in round three and dropped to seventh with a final total of 300.7 points.

Maple Valley scored a 162.4 in round one and a 138.3 in round two.

Schoolcraft took the championship, even after a slow start. It was round three that vaulted the Eagles to the top. They scored a 254.7 in round three, the best score of that round by .7 over White Pigeon, and finished with a final point total of 606.5402.

Delton Kellogg was second at 596.1416, followed by Climax-Scotts 593.7640, White Pigeon 518.4062, Bronson 467.9200, Pennfield 452.9210, and Maple Valley 300.7000.

The league showed that it

will be competitive throughout the season. Climax-Scotts had the top round one score, at 198.3, and Delton Kellogg was the best in round two at 171.1416.

The league gets together again at Climax-Scotts Jan. 28.

Maple valley will be at the Hastings Saxonfest this Saturday (Jan. 17), then will be off until that second SMCCC meet.

Lakewood finished with a team total of 704.0456 on Monday, as it won its own Lakewood Invitational. Hastings scored a 646.7124, Pewamo-Westphalia 618.6824, Portland 557.39, Waverly 511.5304, and Maple Valley 479.528.

Lakewood had the top score in the first and third rounds of competition, with a 214.7 to start the night and a 293.6 to close things out. Pewamo-Westphalia was the only team to top the Vikings in the second round, as

Lakewood scored a 195.7456. "Round two is in need of some cleaning up, we had some timing issues and mental errors," said Lakewood head coach Kim Martin.

"We had a good round one performance with a few minor mistakes. Our round three performance was almost flawless, just one minor stunt issue. The rest was very clean and powerful."

A solid third round vaulted the Hastings Saxons past Pewamo-Westphalia into second place. The Pirates scored a 203.9 in round one and 197.2824 in round two. The Saxons trailed P-W by more than 19 points heading into the third round after scoring a 199.9 in round one and 182.2124 in round two.

The Saxons scored a 264.6 in the third round, compared to 217.50 for the Pirates.

The Maple Valley Lions scored a 153.5 in round one, 121.228 in round two, and 204.8 in round three.

It's Not About the House.... It's about the family that lives in the house.



Give the people you love Safe.Sound.Secure.* protection
from Auto-Owners Insurance Company.

FEATURED QUOTE OF THE MONTH

Home

A Sample Family Living at
123 Main St., Nashville, MI 49073 **\$299.82** a Year

Dwelling	\$300,000
Other Structures	30,000
Personal Property	210,000
Additional Living Expense	60,000
Personal Liability	500,000
Medical Payments	1,000
Deductible	\$500

Includes:

- Guaranteed Home Replacement Cost
- Sewer Back Up to \$5,000
- Personal Property Replacement Cost
- Jewelry Coverage \$5,000
- Special Form Coverage Personal Property
- Mortgage Extra Expense
- And More...

Autos

1. 2008 Chevy Malibu
2. 2005 Ford Taurus **\$680.36** 6 Months

Bodily Injury	\$100,000/\$300,000
Property Damage	\$100,000
Uninsured/Underinsured Motorist	\$100,000/\$300,000
Special Tort Liability	\$500
Property Protection	\$1,000,000
Personal Injury Protection	Included
MCCA/MAIPF/MATPA	Included
Comprehensive (Zero Glass Ded.)	\$250 Deductible
Broad Form Collision	\$500 Deductible
Road Trouble Service	\$75 per occurrence
Rental	\$30 per day/\$600 each occ.

Home Rating Basis: Auto/Life Multiple Policy Disc., Superior Insurance Score, 10% Group Discount, Age of Construction Discount 2008, Protection Class 6, Frame, Mature Homeowner Discount, 0 Claims in 3 years, Home-Owners Insurance Company. Rates Effective 11/26/2008.
Auto Rating Basis: Home/Life Multiple Policy Discount, Superior Insurance Score, 12% Group Discount, PIP includes excess medical and wage loss coverage, Premier Driver Discount, Driver Age 59, Vehicle 1: Use up to 3 miles driven to work, Vehicle 2: Please use, anti-theft, anti-lock brakes. Rates Effective 12/29/2008.

See policy for complete terms, conditions and exclusions. This is not a policy. Contact us to get proposal specific to you.

As a local independent agent, we can
design an insurance program that's just
right for you and your family.



STAN



KELLY



DEBBIE



KEN



BETTY

Auto-Owners Insurance

TRUMBLE AGENCY

178 S. Main, Vermontville • 517-726-0580
225 N. Main, Nashville • 517-852-9680