

MAPLE VALLEY news

...A local paper of today!

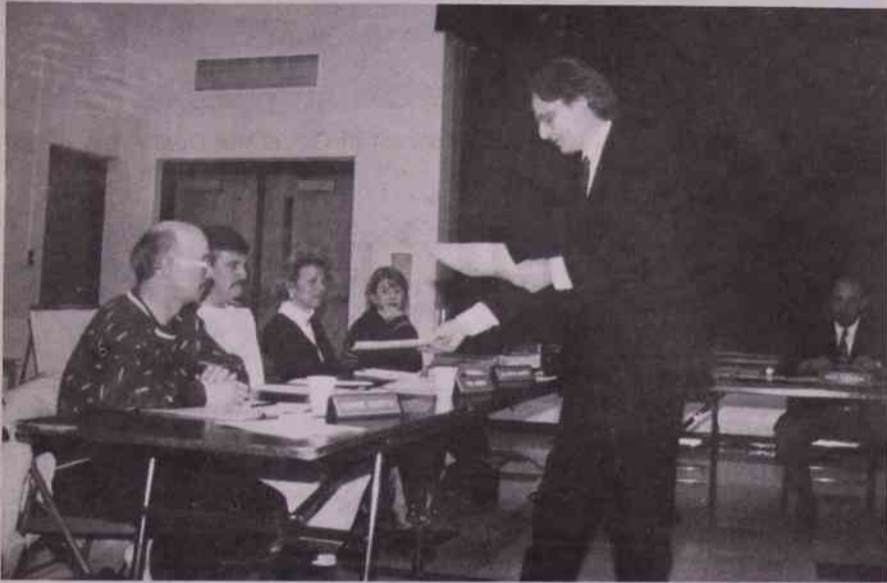
HASTINGS PUBLIC LIBRARY
121 S CHURCH ST
HASTINGS MI 49058-1893

HASTINGS PUBLIC LIBRARY
121 S CHURCH ST
HASTINGS MI 49058-1893

Published by J-Ad Graphics, Inc.
1351 N. M-43 Highway, Hastings, Michigan 49058
P.O. Box A, Nashville, Michigan
Phone: 945-9554 (Hastings)

Vol. 130-No. 4 January 22, 2002

School board gets five year review, recognition



Superintendent Clark Volz hands certificates to each school board member, honoring them for their work in the district, as last weeks school board meeting.

by Shawna Hubbarth
Staff Writer

Maple Valley Superintendent Clark Volz honored the school board at the meeting last week for School Board Recognition Month.

Each school principal gave a report to the board about the things the district had accomplished in the schools in the past five years. On display was a photo presentation highlighting the "befores and afters" in the district.

Volz thanked the board for the work and accomplishments, and gave them an apple to symbolize the board "fostering the seeds in our children."

"I want to commend you all for the high expectations for the district," he told the

board.

Maple Valley High School Principal Todd Gonsler reported some of the five-year accomplishments at the high school. He cited technology overhauls, leadership classes, staffing improvements, the old gym being redone, the addition of the new gym, new practice fields, new programs such as Reading Recovery and Reading Buddies, the athletic director/assistant principal split, on-line attendance, bleachers, a new mural, upgrades in the baseball and softball fields and many more improvements.

In the future, he said, they would be looking at a new middle school, block scheduling, curriculum upgrades, a new mission statement,

At Maplewood school, Principal Fred Davenport cited updating in the classrooms, updated school technology, improved financial resources for classroom materials, and improved professional development for staff as the improvements in the classroom.

lights and sounds in the auditorium and gyms, and a



Fuller Elementary Principal Judy Farnsworth (far left) gives the school board members a tour of the school before the meeting last week Monday.



School board members Wayne Curtis and Allison Avery check out the new office space at Fuller Elementary last week.

Looking for the 2002 Maple Syrup Queen...

Candidates are being sought to vie for the title of 2002 Vermontville Maple Syrup Queen.

The annual competition is open to all junior girls who attend Maple Valley High School.

The person who is selected will reign as syrup queen for 2002. Applications for the contest are available in the high school office. The deadline to apply is Jan. 31.

All queen applicants and their parents are invited to an orientation Feb. 4 to learn more about the queen and alternate's duties. The girls also have an opportunity to

learn more about the village and maple syrup that evening because there will be a discussion about the questions that will be asked during the judging process the following week.

The new maple syrup queen and an alternate queen will be selected at a 7 p.m. community program Tuesday, Feb. 12 at the Vermontville Congregational Church in Vermontville, said Marlene Martin, who has coordinated the contest and worked with the queens and courts for many years. The event, sponsored by the Vermontville Lions Club, includes a dinner.

The queen and her alternate will reign over the Vermontville Syrup Festival, which is held the last weekend in April, and will promote locally-produced maple syrup products around the state at other times during the year. They are expected to appear in 12 to 14 parades.

A \$500 scholarship will be awarded to the queen. The alternate will receive \$250. Mileage also is paid for the two to represent the Vermontville Maple Syrup Association at parades within a 50 radius of Vermontville.

community center that is in the "dream stage."

Judy Farnsworth cited an expanded book room, no more portables, new playground equipment, the new position of administrative assistant to the principal, Title One staff, smaller classroom sizes, and added art room, an added music program and music teacher, laptops for teachers, remodeling of classrooms, and many other improvements in Fuller Elementary.

At Maplewood school, Principal Fred Davenport cited updating in the classrooms, updated school technology, improved financial resources for classroom materials, and improved professional development for staff as the improvements in the classroom.

Before the meeting, the board toured Fuller Elementary and had a chance to see some of the new things happening in the school.

Also at the meeting the board:

- Heard from Volz that there is good integrity on the back of the old bus garage, and that just as a possibility, the board can look at keeping it for storage. He said the contractor looked at the building and said it could be saved and reconstructed for around \$23,000. Volz said he was not asking for a decision and said he would look further into the idea.
- Looked over several different sign proposals for all

the schools. The board will be replacing the signs at the schools. The one at the high school was tipped and ruined during the high wind-storm last fall.

• Heard comments from Superintendent of Eaton Intermediate School District Jon Tomlanovich.

"My perception of what has happened in the valley is nothing less than outstanding in the last five years," he said.

In This Issue...

- 'Wizard of Oz' production dates set by The Revue
- New Hastings City Bank office opens in Nashville
- Maple Valley PTO plans carnival for Feb. 23
- Lion hoopsters seize league lead from Olivet

Tax help available for senior citizens, low income people

The American Association of Retired Persons (AARP), in cooperation with the Internal Revenue Service, will provide free assistance with tax forms this winter and spring to middle and low income taxpayers, and especially to those ages 60 and older, starting next month.

Volunteers are trained to complete basic income tax

Automotive

2000 BUICK REGAL LS: \$11,500 includes ext. warranty. Leather seats, CD & tape. White, sharp. (989)235-4872.

Mobile Homes

REPO: MUST SELL! Will look at any offer. 3 bedroom, 2 bath. Will move if necessary. 1-800-672-9604

FIRST TIME HOME buyers! We represent several banks, they are eager to sell homes they have repossessed. No application fee if you mention this ad. 1-800-466-0461

forms and answer tax questions. Since its start in 1968, AARP Tax-Aide has helped more than 30 million taxpayers and is a confidential service supported by local people. The program will start during the last week in January and continue for as long as requests for help warrant.

The service will be offered in Nashville at the

Financial Services

DEBT CONSOLIDATION/ CASH QUICK/ LOWER INTEREST RATES. GOOD OR BAD CREDIT OK. To consolidate your debt, get cash out or lower your interest rates. Call David Thompson at Allied Mortgage for CONFIDENTIAL & PERSONAL SERVICES toll free 1-888-618-5810 ext.#2033.

Foster Care

OAKVIEW AFC has opening. Private room, private bath, good location, family atmosphere. Hastings, (616)948-2352.

Castleton Township Hall on Tuesdays, Feb. 5 and 19, and March 12 from noon to 4 p.m. Appointments should be made by calling the Nashville Village Offices at 852-9544.

In addition to the current year's blank forms, taxpayers should bring a copy of year 2000 returns as well as information about year 2001 taxable income and deductions. This would include all W-2 forms showing salary and wages, unemployment compensation statements, SSA-1099 forms for social security benefits, 1099 forms showing pensions, interest, and dividends. If eligible for any Michigan tax credits, taxpayers should also bring information about year 2001 property taxes or rent, heating costs, and prescriptions and drugs.

John A. Panfil is the local coordinator for the AARP Tax-Aide program.



The Revue will present the classic "Wizard of Oz" at the Opera House, the opening night being February 1 at 7 p.m. Here Lynn Blakely plays the Wicked Witch of the West, and Dhanielle Tobias plays Dorothy.

'Wizard of Oz' production dates set by The Revue

by Shawna Hubbarth
Staff Writer

The Revue will present "The Wizard of Oz" Feb. 1, 2, 3, 7, 8, 9 and 10 at the Opera House in Vermontville.

The musical involves about 40 members, some new to the stage and others veterans. The musical has cast members age 2 and up.

Those involved with the show said there would be some surprising special effects and said audience members should "hang onto their hats."

"The movie is the fifth most popular movie of all time," said Pat Hansen, who is involved with the show. "It's a show that attracts adults and children."

Dhanielle Tobias is playing Dorothy, and her dog is playing Toto. Don Blakely is playing the Tin Man, and Eric Swanson is playing the Lion.

Hansen said the costumes for the show are looking very good, and were made by Maggie Hart of Bellevue.

The Thursday-Saturday shows are at 7 p.m., and Sunday matinees are at 3. Tickets are \$8 for adults, \$5



Dorothy (Dhanielle Tobias) and the Scarecrow (Nate Smith) share a song in "Wizard of Oz."

for children under 12, and \$7 for seniors.

Tickets are available at the door or can be reserved by calling (616) 367-4455, or e-mail therevue1@yahoo.com

The show is made possible with the support of Michigan Council for Arts and Cultural Affairs and Arts Council of Greater Lansing, Inc.

Your homeowners policy comes with something extra...

Real people. Hometown people who will help you through the details of buying insurance

or making a claim. While some insurance companies are no more than an 800 number and a voice

mail menu, we're here to

help—in good times and

in bad—year after year.



Auto-Owners Insurance
Life Home Car Business
The No Problem People™

TRUMBULE AGENCY
178 Main, Vermontville • 517-726-0580



COMPETITIVE BASEBALL 2002 SEASON

South-Central Michigan Youth Baseball
Barry County Area League

Now Accepting Team Applications for the Following Divisions

- Mickey Mantle (Ages 16 and under) - 12 game season
- Sandy Koufax (Ages 14 and under) - 20 game season
- Pee Wee Reese (Ages 12 and under) - 20 game season
- Willie Mays (10 and under) - 20 game season

Player fees and participation in a fund raiser will include: Uniforms, umpires, insurance, baseballs, equipment, and district fees all provided by the league.

Contact: Mike McPhillips at (616) 945-3512 or Mark Brisboe at (616) 948-0506 or Dan Bobolts at (616) 891-8493

Visit our Website at <http://www.scmby.com/>

**Call for
Maple Valley
Classifieds**
945-9554 or
1-800-870-7085

HASTINGS 4

Downtown Hastings on State St.
1-800-535-7203 945-2243

\$4.50 Kids all shows

\$4.75 DAILY Matinees til 6pm & Seniors

\$5.00 Students & Late Shows Fri & Sat

\$5.50 Evenings Mon - Thurs

No passes DIGITAL STEREO

Unlimited Free Drink Refills & 25¢ Corn Refills

Stadium Seating Gives YOU An Unobstructed View

MOVIE GUIDE



BLACK HAWK DOWN

SHOWTIMES 1/22 - 1/24

BLACK HAWK DOWN (R)

DIGITAL/STADIUM SEATING

1:45, 4:30, 7:15, 10:00

ALI (R) 6:45, 9:45

KATE & LEOPOLD (PG-13)

11:45, 2:30, 4:50, 7:20, 9:45

JIMMY NEUTRON: BOY GENIUS (PG)

12:15, 2:25, 4:50

LORD OF THE RINGS

(PG-13) DIGITAL/STADIUM SEATING

11:30, 3:00, 6:30, 9:55

COUPON FREE 20oz DRINK

with \$1.50 (1/2 price) purchase of 46oz. bag of buttery popcorn

94¢ one per ad to Hastings 4

WWW.GQTI.COM

New Hastings City Bank office opens in Nashville

Hastings City Bank has announced the opening of its new full-service branch office in Nashville this past Monday, Jan. 21.

The new building will offer Hastings City Bank customers added convenience and expanded space. The Nashville office features drive-in facilities, a drive-up automatic teller machine (ATM), night depository, conference room and expanded hours.

Hastings City Bank acquired the current storefront offices in Nashville from Comerica Inc. in 1987.

Local officials said changes in lifestyles and advances in technology have driven the need for a full-



The Hastings City Bank Nashville office has opened and will be hosting an open house this Friday from 11 a.m.-3 p.m..

the added security of being able to make deposits through the night depository from their cars. And, the interior to the offices are designed to offer comfort, space and privacy for both our customers and employees."

Mark Kolanowski, president and chief executive officer of Hastings City Bank, added, "Thompson-Phela Inc., a Michigan-based corporation specializing in financial institutions, has been our partner in the design process, taking into consideration the current needs of our customers and employees, the history of the area, plus giving us room to grow. This new office reflects our commitment to these com-

munities and the people within them. In 1886, our mission was to provide financial services to our customers, enriching the surrounding community. That remains our mission today."

The staff at Nashville is extending the public an invitation to drop by the new office and say "Hi." The expanded hours of operation are Monday-Thursday: drive-up 8:30-5:30, lobby 9-5, Friday: drive-up 8:30-5:30, lobby 9-5:30, and Saturday: drive-up 8:30 to noon, lobby 9 a.m. to noon.

The bank will hold an open house on Friday, the 25th, and everyone is invited to stop by and see the new building.

Maple Valley graduate in MSU theatre production

by Shawna Hubbard
Staff Writer

Maple Valley graduate Jeremy Campbell, a Michigan State University English major, will take to the stage for a drama, "Been Taken" at the school.

His mother, Kim, said this is the first time in this play for him. She said when he was a senior in Maple Valley, he acted in a "Midsummer's Night's Dream," and has since gone on to write his own plays.

Kim said Jeremy has been having a fun time getting ready for the play.

"He doesn't tell me much about it," she laughed. "He likes for me to be surprised."

Jeremy said the play has two acts, the first in which the audience meets a group of college students, and the second act, where they are seen five years later.

"The play is about when our expectations we had when we were younger were not met when we are older," he said.

Jeremy said the play includes a cast of 12 actors, six with onstage roles.

"Roger Hedden wrote it,



Jeremy Campbell.

he is a playwright out of New York, and he is here working with us on it."

This is the first MSU production for Jeremy, although he has gotten some acting experience with a group on campus, and has performed in one acts.

He said he has been rehearsing with the cast since before Christmas break.

"It's a lot of fun, the people in it are great and that really helps a lot."

Kim said the family will be there on opening night, which is Thursday evening, Jan. 24, at 7:30 p.m. at the

MSU auditorium in the downstairs. Other show dates are set for Jan. 25, and 26 at 8 p.m., Jan. 31 at 7:30 p.m., Feb. 1 and 2, at 8 p.m., and Sunday at 2 p.m.

Kim said her son has been involved in other activities while at the school, including writing for the newspaper, involvement with the honors college and Royal Program, has studied in Italy for six weeks and has been busy writing plays.

While he has written a lot of one-act plays, for his honors thesis, he will be writing his first full length play.

After graduation, Jeremy, who is an English major, said he plans to take a half a year or so off from school and apply for grad school either on the east or west coast.

"University of Southern California is looking like the best right now," he said.

He wants to go to grad school for play/screen writing.

"I like it because it's incredibly hard," he explained. "With screenwriting you can get away with a lot more, the camera can always cut away, and the characters don't have to be as rounded as with playwriting. With playwriting they have to be interesting enough to watch for two hours or so. It's also live and there is something exciting and terrifying about that."

service office. The previous office was designed and built in an era when customers were less mobile, ATMs had not been invented and applying for a loan was a rare event. In addition, the Nashville area has experienced growth both in asset size and customer base, necessitating the additional space.

Gina Blough, branch administrator, said, "We are excited about the new office and the convenience they offer to customers. Have just a quick transaction? Use our new drive-in. Need to withdraw cash? Drive up to the ATM. Business owners have

- ♥ Good Selection of Calico for Quilting, etc.
- ♥ Gift Certificates
- ♥ Fleece for Winter Wear Sale Priced As Marked

QUESTIONS? ASK US... **Sisters Fabrics**

218 E. State St., Hastings • 945-9673

OPEN: Monday-Thursday 8 am-5:30 pm
Friday 8 am-7 pm; Saturday 9 am-5:30 pm

Hulst Cleaners Pick-Up Station

Call 945-9554 for Maple Valley News ACTION-Ads!

The Revue—The Vermontville Theatrical Group presents

'The Wizard of Oz'

Feb. 1st, 2nd, 7th, 8th & 9th at 7 p.m.
Feb. 3rd & 10th at 3 p.m.
at the Vermontville Opera House

ADVANCE TICKETS CAN BE ORDERED AT (616) 367-4455
Adult - \$8; Senior Citizen & Students - \$7; Children 12 & under - \$5

COMMUNITY CELEBRATION

Date **Friday, Jan. 25th**
Time: **11:00 a.m. to 3:00 p.m.**
Where: **At our new office in Nashville**
310 N. Main St., Nashville

BALLOONS

REFRESHMENTS

PRIZE DRAWINGS

Hastings City Bank
Here For You Since 1886 Member FDIC

School Lunch Menus

Maple Valley Elementary Schools (Maplewood & Fuller) Lunch Menus
Wednesday, Jan. 23
 Nachos, green beans, fruit cocktail, apple crisp, 1/2 pt. milk.
Thursday, Jan. 24
 M.W. Hungry Howies. Pizza, whole kernel corn, peaches, fortune cookie, 1/2 pt. milk.
Friday, Jan. 25
 Cheesie bread sticks, spaghetti, applesauce, cookie, 1/2 pt. milk.
Monday, Jan. 28
 Chicken sandwich, tater tots, cheetos, apple, 1/2 pt. milk.
Tuesday, Jan. 29

Hot dog, potato sticks, whole kernel corn, grape push-up, 1/2 pt. milk.
Note: Maplewood Elementary will be serving breakfast this year starting the first of the school year.
Maple Valley Jr./Sr. High School Lunch Menu
Wednesday, Jan. 23
Choose One - Wet burrito, pizza, chicken sandwich, breakfast bar. **Choose Two** - Garden salad, green beans, apple crisp, juice, milk.
Thursday, Jan. 24
Choose One - Macaroni and cheese, pizza, cheeseburger, taco bar. **Choose Two** - Garden salad, whole

kernel corn, peaches, juice, milk.
Friday, Jan. 25
Choose One - Cheesie bread sticks, pizza, chicken sandwich, salad bar. **Choose Two** - Garden salad, California blend, applesauce, juice, milk.
Monday, Jan. 28
Choose One - Hot pocket, pizza, chicken sandwich, salad bar. **Choose Two** - Garden salad, tater tots, apple, juice, milk.
Tuesday, Jan. 29
Choose One - Double dogs, pizza, chicken sandwich, taco bar. **Choose Two** - Garden salad, whole kernel corn, grape push-up, juice, milk.

Maple Valley PTO plans carnival for Feb. 23

The Maple Valley PTO families of the elementary schools. once again will be host for a carnival for the students and Fuller Street Elementary

will be the location for this year's event, scheduled for Saturday, Feb. 23, from 2 to 4 p.m.

Local PTO members say lots of fun is planned, including games, great prizes, face painting, balloons, a cake walk, and plenty of food.

The PTO is asking the community to help make this a spectacular event for children of the community. In order to have wide variety of games for the kids to play at the carnival, a lot of volunteers are needed. Help is needed to set up games, run games, sell tickets, and in various other areas.

Anyone interested in volunteering to help with a one-hour shift at the carnival can call Fuller Street Elementary at 852-9468.



Dunklee-Morgan exchange vows

Mathew Dunklee and Kathy Morgan were pronounced husband and wife on Aug. 25, 2001. Parents of the newlyweds are Dick and Diage Morgan and Ed and Sue Dunklee.



Ashley-Franklin to wed

Mark and Wendy Ashley of Nashville are pleased to announce the engagement of their daughter, Mandy Jacklyn Ashley, to Paul Dean Franklin Jr., the son of Paul Sr. and Sharon Franklin of Bellevue.

The bride is a 1997 graduate of Maple Valley and is attending cosmetology school at School of Designing Arts in Battle Creek.

The groom is a 1992 graduate of Bellevue. He is employed by Carol's L.L.C. excavating company where he is a heavy equipment operator.

The couple resides in Bellevue.

A June 22, 2002 wedding is being planned.

Snowmobile safety classes scheduled

The Eaton County Sheriff Department will be conducting snowmobile safety classes Monday and Wednesday, Feb. 4 and 6. Classes will be held from 6 to 8 p.m. for a total of four hours of instruction in the

sheriff's department training room, 1025 Independence Blvd., Charlotte.

Classes are free of charge and enrollment is limited to 20 persons per class and participants must be at least 12 years of age. Call Jerri Nesbitt at 543-3512, extension 390 or 372-8217, extension 390 to register.

Diana's Place

The Place to Go for Professional Styling

MEN, WOMEN & CHILDREN HAIR STYLING

Corner of M-66 and Thornapple Lake Road

1-517-852-9481

National Ads

HOMEWORKERS NEEDED: \$635 weekly processing mail. Easy! No experience needed. Call 1-800-440-1570 Ext.5085 24hrs.

LATE START CLASSES

There is still time to register!

- General Accounting II - TTH 5:10-7:05 pm starts 1/29/02
- Intro. to Business - W 7:10-10:20 pm starts 1/30/02
- Business Correspondence M 7:10-10:20 pm starts 1/28/02
- Business Statistics - TH 7:10-10:20 pm starts 1/31/02
- Business Law II - T 7:10-10:20 pm starts 1/29/02
- Intro to Computer Systems TH 7:10-10:20 pm starts 1/31/02
- Intro to Criminal Justice - M 6:00-9:10 pm starts 1/29/02
- Criminal Law - W 7:10-10:20 starts 1/30/02
- Macro Economics - MW 5:10-6:45 pm starts 1/28/02
- Micro Economics - M 1:00-4:10 pm starts 1/28/02
- Freshman Composition - M 6:00-9:10 pm starts 1/28/02
- Writing Skills - W 5:00-9:10 pm starts 1/30/02
- Western Civilization - M 6:00-9:10 pm starts 1/28/02
- Modern America - T 6:00-9:10 pm starts 1/29/02
- Fund. of Early Childhood Education - T 6:00-9:10 pm starts 1/29/02
- Child Care Administration - W 6:00-9:10 pm starts 1/23/02
- Positive Child Guidance - M 6:00-9:10 pm starts 1/28/02
- Intro to Legal Assistant - Th 9:45-11:25 am starts 1/29/02
- Mathematics Clinic - TTH 5:55-7:20 pm starts 1/29/02
- Intro to Ethics - M 6:00-9:10 pm starts 1/28/02
- American System of Government - F 8:15-11:25 am starts 1/25/02 and TH 7:10-10:20 pm starts 1/31/02
- Intro to Psychology - TH 6:00-9:10 pm starts 1/31/02
- Developmental Psychology - T 6:00-9:10 pm starts 1/29/02
- Abnormal Psychology - TH 6:00-9:10 pm starts 1/31/02
- Intro to Sociology - WF 8:15-9:50 am starts 1/23/02 and T 6:00-9:10 pm starts 1/29/02
- College Reading & Study Skills - M 5:00-9:10 pm starts 1/28/02

Don't put your future on hold!



Fehsenfeld Center

2950 W. M-179 Hwy.
 Hastings, MI 49058
 (616) 948-9500
 www.kellogg.cc.mi.us

CALENDAR OF EVENTS

Barry County Extension Calendar of Events

- Jan. 25 Ag Action Day, Kalamazoo
- Jan. 28 Rabbit Devel. Committee Mtg., 7 p.m. at HHS Ag Room
- Feb. 4 Barry County Homemakers Adv. Council, 5:30 p.m. at Ext. Conf. Room on Retirement Planning
- Feb. 7 Fair Board Meeting, 7:30 p.m., Expo Center
- Feb. 7 RUP Training, 9-12; Examination, 12:30-3 p.m., located to be announced
- Feb. 11 4-H Horse Developmental Committee Meeting, 7 p.m., HHS Cafeteria
- Feb. 19 Barry County FINAN, Call for an appointment.
- Feb. 20 4-H Advisory Council Meeting, 7 p.m., Extension Office.
- Feb. 21 Fair Board Meeting, 7 p.m., Expo Center.
- Feb. 22 Clarksville Crops Update, 9 a.m.-3 p.m., Clarksville Experiment Station.

Please Note: The Extension Office will be closed during lunch hours on Fridays from 12 noon to 1 p.m. - Until further notice.

What's Coming to Town?



Woodlawn Meadows Retirement Village

Construction plans are currently underway for Woodlawn Meadows Retirement Village in Hastings, (just off of East State Street).

The planned project will be a multi-phase retirement community offering:

- ASSISTED LIVING AND MEMORY CARE FOR SENIORS

Opening Spring 2002

Please call us to discover all that this community has to offer.

616-897-0200

A Leisure Living Managed Company - www.leisure-living.com

Commission on Aging menu, schedule of events

Commission of Aging Hearty Meals
Wednesday, Jan. 23
 Scalloped potatoes w/ham, spinach, applesauce, dinner roll.
Thursday, Jan. 24
 Roast beef w/gravy, mashed potatoes, squash, dinner roll, cobbler.

Friday, Jan. 25
 Baked fish, California blend, peas, rice pilaf, plums.
Monday, Jan. 28
 Chicken parmesan, Italian blend, corn, noodles, cookie.
Tuesday, Jan. 29
 Turkey noodle casserole, broccoli au gratin, winter

squash, fruited jello.
Lite Menu
Wednesday, Jan. 23
 Chef's salad, Spanish bean salad, fruited jello.
Thursday, Jan. 24
 Homemade egg salad, broccoli raisin salad, pineapple, dinner roll.

Friday, Jan. 25
 Turkey pasta salad, coleslaw, mandarin oranges.
Monday, Jan. 28
 Ground bologna, baked beans, diced pears, whole wheat crackers.
Tuesday, Jan. 29
 Wing dings, cole slaw, tropical fruit, dinner roll.

Events
Wednesday, Jan. 23 - Hastings, crafts/nails; Nashville, puzzle day; Woodland, puzzle day; Delton, puzzle day.
Thursday, Jan. 24 Hastings, music; Nashville, bingo; Delton, Swim Day.
Friday, Jan. 25 - Hastings,

bingo; Nashville, popcorn day; Woodland, Birthday Party.
Monday, Jan. 28 - Hastings, music; Nashville, game day; Woodland, game day; Delton, game day.
Tuesday, Jan. 29 - Hastings, Our Favorite Kids; Nashville, Grandma's Kids

GOOD TIME PIZZA
 501 North Main, Nashville
852-1985
 OPEN 7 DAYS A WEEK
 Mon.-Tues. 10 am-10 pm; Wed. 10 am-11 pm;
 Thurs. 10 am-11 pm; Fri. 10 am-12 pm;
 Sat. 10 am-11 pm; Sun. 11 am-10 pm

HOMETOWN LUMBER & HARDWARE
 219 S. State St., Nashville, MI
852-0882
 Monday-Saturday 7:30 am to 5:30 pm
www.hometownlumber.com

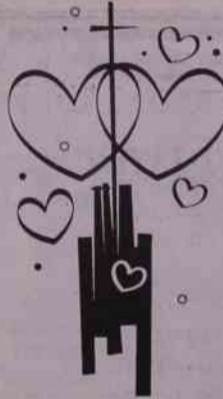
HELP SUPPORT OUR LOCAL CHURCHES... ADVERTISE IN THIS SPACE!
Call... 945-9554
 Ask for our Sales Dept.

Unconditional Love

To love someone unconditionally means that one's love is absolute and is without limits. Human emotions are such that we usually distance ourselves from those with unpleasant attitudes or behaviors, so at times loving someone regardless of their actions or feelings toward us is extremely difficult. An example of this could be a married couple - they may be so much in love on their wedding day, but later get a divorce because they no longer care for each other. Unconditional love is a blessing from our Heavenly Father and involves forgiveness, understanding, wisdom, and praying for our loved ones. A parent's love for their children, or a child's love for their parents can be unconditional, and God's love for His chosen people is also unconditional. The Bible tells us that there is nothing in all creation that will ever be able to separate us from the love of God, which is ours through Christ Jesus our Lord.

Live a life of love, just as Christ loved us and gave Himself up for us as a fragrant offering and sacrifice to God.

N.I.V. Ephesians 5:2



Maple Valley Chapel
 204 Queen Street • Box 517
 Nashville, Michigan 49073
(517) 852-0840
 SCOTT A. DANIELS
 Manager

SHIRLEYS CHUCKWAGON CAFE
 202 N. Main St., Nashville, MI 49073
 Sun.-Thurs. 6 am-3 pm; Fri. & Sat. 6 am-9 pm
517-852-2500
 HAPPY TRAILS...
 THE GARDNERS: SHIRLEY AND RICHARD

MACE PHARMACY
 219 N. Main Street, Nashville
852-0845
 HOURS:
 Monday-Friday 9 am to 6 pm;
 Saturday 9 am to 4 pm

WOLEVER'S Real Estate
 Elsie E. Wolever, Broker Res.
(517) 726-0637
 135 Washington P.O. Box 895
 Vermontville, MI 49096-0095

LOCAL CHURCH SCHEDULE

ABUNDANT LIFE FELLOWSHIP MINISTRIES
 A Spirit-filled Church
 Meeting at the Maple Leaf Grange Hwy. M-66 south of Assyria Rd. Nashville, MI 49073
 Sun. Praise & Worship 10:30 a.m., 6:00 p.m.; Wed. 6:30 p.m. Jesus Club for boys & girls ages 4-12. Pastors David & Rose MacDonald. An oasis of God's love. "Where Everyone is Someone Special." For information call 1-616-731-5194 or 1-517-852-1806.

ASSEMBLY OF GOD CHURCH
 803 Reed St., Nashville
 Sunday School 10 a.m.
 Sunday: A.M. Worship 11 a.m.
 Evening Worship 6 p.m.
 Wednesday Evening; Prayer Meeting 7 p.m.
 PASTOR GLENN BRANHAM

BASILINE UNITED METHODIST CHURCH
 9617 E. Baseline Rd. Corner of Baseline & Church Roads (2 miles east of M-66 on Baseline)
 Sunday School 9:30 a.m.
 Worship Service 11 a.m. (Nursery Provided)
 Youth Groups, Bible Study and many other activities.
 Phone (616) 963-7710
 REV. GLEN WEGNER

CHURCH OF THE NAZARENE
 301 Fuller St., Nashville
 Sunday School 9:45 a.m.
 Sunday: A.M. Worship 11 a.m.
 P.M. Worship 6 p.m.
 Wednesday Evening; Worship 7 p.m.
 REV. ALAN METTLER

CHESTER GOSPEL CHURCH
 3744 W. Vermontville Hwy.
 Sunday School 9:45 a.m.
 Morning Worship 11 a.m.
 Evening Worship 6 p.m.
 Wednesday Family Night Service 6:45 p.m.
 PASTOR MARC S. LIVINGSTON
 Phone: 543-5488

FIRST CONGREGATIONAL CHURCH
 110 S. Main, Vermontville
 Morning Worship 11 a.m.
 Church School 10 a.m.
 Fellowship Time After Worship
 REV. ERIC LISON

SOUTH KALAMO CHURCH
 Corner of Kalamo Highway & Ionia Rd.
 Sunday A.M. Worship 10:30 a.m.
 Evening Worship 6 p.m.
 Wednesday Evening at 7 p.m.: Children's Classes Youth Group • Adult Worship
 PASTOR JEFF SWIFT

GRACE COMMUNITY CHURCH
 Meeting at Maple Valley High School
 Morning Celebration 10 a.m.
 Contemporary Service, Relevant Practical Teaching, Nursery, Children's Classes, Youth Group, Adult Small Groups, Leadership Training
 PASTORS: DON ROSCOE and ROB VAN ENGEN
 Phone: (517) 852-9228

GRESHAM UNITED METHODIST CHURCH
 One mile N. of Vermontville Hwy. on Mulliken Road
 Church Service 9:30 a.m.
 Sunday School 10 a.m.
 Fellowship Time 10:30 a.m.
 Adult Class 10:50 a.m.
 PASTOR JEFF BOWMAN

NORTH KALAMO UNITED METHODIST CHURCH
 Worship Service 9:30 a.m.
 PASTOR MARK THOMPSON

MAPLE GROVE BIBLE CHURCH
 8593 Cloverdale Road (1/2 mile East of M-66, 5 mi. south of Nashville)
 Sunday School 10 a.m.
 A.M. Service 11:15 a.m.
 P.M. Service 6 p.m.
 PASTOR GEORGE GAY

NASHVILLE BAPTIST CHURCH
 304 Phillips St., Nashville
 Sunday School 9:45 a.m.
 A.M. Service 11 a.m.
 P.M. Service 7 p.m.
 Wed. Service 7 p.m.
 PASTOR LESTER DeGROOT
 PASTOR DEANO LAMPHERE
 PASTOR MATT ROHDE

NASHVILLE UNITED METHODIST CHURCH
 Located on the corner of State and Washington streets
 Worship Service 9:45 a.m.
 Sunday School 11:15 a.m.
 PASTOR DIANNE BOWDEN
 At Home: 852-0685
 Church Phone: 852-2043

PEACE UNITED METHODIST CHURCH OF BARRYVILLE
 6043 SCOTT RD. (M-79)
 Worship 9:30 a.m.
 Children's Sunday School 9:45 a.m.
 PASTOR SUSAN TROWBRIDGE
 (517) 852-1993

QUIMBY UNITED METHODIST CHURCH
 M-79 West
 Sunday School 10 a.m.
 Worship 11 a.m.
 PASTOR KENNETH VAUGHT
 (616) 945-9392

ST. ANDREW & MATTHIAS INDEPENDENT ANGLICAN CHURCH
 2415 McCann Road
 Sunday Services: 9:15 a.m. Morning Prayer
 11:00 a.m. Holy Communion
 For more information call 795-2370 or Rev. David T. Hustwick 948-9604
 Traditional 1928 Book of Common Prayer used for all services. Affiliated with the Independent Anglican Church (Canada Synod).

ST. CYRIL'S CATHOLIC CHURCH
 203 N. State, Nashville
 Sunday Mass 9:30 a.m.
 FATHER MIKE STAFFORD
 A mission of St. Rose Catholic Church, Hastings

VERMONTVILLE BIBLE CHURCH
 250 N. Main St., Vermontville
 Sunday School 9:45 a.m.
 Worship Service 11 a.m.
 Sunday Evening Service 6 p.m.
 Wed. Evening Service 7 p.m.
 AWANA 7-8:30 p.m. Wed.
 PASTOR DANIEL E. SMITH
 ASST. PASTOR LES ANDERSON

VERMONTVILLE UNITED METHODIST CHURCH
 108 N. Main, Vermontville
 Sunday School 10 a.m.
 Church Service 11 a.m.
 PASTOR JEFF BOWMAN

MOST HOLY ROSARY CHURCH
 Roman Catholic Latin Mass
 314 Main, Middleville
 Sunday Mass 9 a.m.
 616-795-9030
 FATHER PAUL ANDRADE

Area Obituaries

Geraldine Emery

CHARLOTTE - Geraldine Evelyn Emery, age 82, of Charlotte, Mich., died Jan. 15, 2002.

Mrs. Emery was born March 2, 1919, in Flint, Mich., the daughter of Charles and Cora (Meade) Grundstrom.

Mrs. Emery enjoyed lots of volunteer work, watching children and sharing flowers, with her neighbors. She was a "neighborhood grandma."

She is survived by hus-

band, Thomas A. Emery; son, Thomas C. (Barbara) Emery of Charlotte, daughter, Kathi (Tom) Dominguez of DeWitt, Mich., son, James D. (Nancy) Emery of Land O Lakes, Florida, son Eugene R. (Linda) Emery of Vermontville, Mich., daughter, Camen Emery of Holt, son, Gerald (Donna) Lewis of Chicago, Ill.; 25 grandchildren; 24 great grandchildren.

She was preceded in death by daughter, Charlene Lewis

Vaughn.

Family Affirmation Service was held Saturday, Jan. 19, 2002, at Pray Funeral Home, Charlotte, Mich. Charles Jenson officiated. Interment was in West Carmel Cemetery in Charlotte.

Further information available at www.prayfuneral.com.

Arrangements were held Pray Funeral Home, Charlotte.

Raymond "Jack" Harvey

NASHVILLE - Raymond "Jack" Harvey, age 77, of Nashville, died Wednesday, Jan. 16, 2002 at his residence in Nashville.

He was born on Jan. 12, 1925 in Lansing, MI, the son of Bernard O. and Orpha (Barnum) Garvey. He spent his childhood in Lansing and later moved to the Nashville area. He attended area schools and earned his GED while serving in the U.S. Army from 1943-1945.

He married Ella Marie Hampton on May 11, 1948 in Nashville, MI.

He served in the U.S. Air Force from 1948 until his retirement 18 years later in 1965, retiring with the rank

of E-5 Staff Sergeant. After retirement the family left Texas and returned to Michigan. He then engaged in the plumbing business and spent many years doing woodworking, hunting, fishing and gardening. He walked at least four miles each day, rain or shine.

Mr. Garvey was preceded in death by his parents, Bernard O. and Orpha (Barnum) Garvey; brother, Bernard "Junior" Garvey; and grandson, Aaron Lee McIntyre.

Surviving are his wife, Ella Garvey, of Nashville; daughter, Linda (Hugh) Wolcott of Nashville; son, Ray and (Charlene) Garvey

of Nashville; daughters, Kirsti (Darwin) McIntyre of Nashville and Rex-Ann (Dion) Rasey of Nashville, Kathy (Rock) Ludwick of Bronson; sister, Melva Turner of California; sister-in-law, Betty Garvey of Nashville; 16 grandchildren and eight great grandchildren.

Services were held Saturday, Jan. 19, 2002 at Maple Valley Chapel. Pastor Glen Branham officiated.

Memorials may be made to the American Cancer Society.

Arrangements were made by Maple Valley Chapel, Nashville, MI.

Bernard "Bernie" Junior Booyinga

MASON - Bernard "Bernie" Junior Booyinga, age 67 of Mason, Mich., formerly of Charlotte, Mich., died Tuesday, Jan. 15, 2002.

Mr. Booyinga was born March 10, 1934, in Dun-

ningville, Mich., the son of Louis Bernard and Estella Mae (Thomas) Booyinga.

He is survived by his loving companion, Phyllis VanDeMoortel and cousins, Brian (Voni) Booyinga of

Dansville, Sheryl Kletke of Holt, Joanne McGlocklin of Battle Creek and Brent Booyinga of Battle Creek.

A graveside service was held Friday, Jan. 18, 2002 at Ft. Custer National Cemetery in Augusta, Mich. Rev. Jeff Bowman officiated.

The family suggests memorial contributions may be made to Gresham United Methodist Church or American Diabetes Association.

Further information is available at www.prayfuneral.com.

Arrangements were made by Pray Funeral Home, Charlotte.

Paul E. Williams
Jan. 24, 1928 - Jan. 20, 2000

Please hold our hands, as we walk down the bumpy roads.
Use your wisdom and knowledge to guide us the right way.
When we fall, give us your strong hand.
When we cry, put your warm arms around us,
wipe the tears and kiss us gently on the cheek.
Then we will know you are there,
so we may continue on our way.

We love and miss you—
Wife-Dorothy; Daughter-Judy; Granddaughters- Lynn & Anna

Arlie C. Goforth

NASHVILLE - Arlie C. Goforth, age 80, of Nashville, died Sunday, Jan. 13, 2002 at Carveth Village, Middleville.

She was born on May 27, 1921, the daughter of Jack and Lora (Stokes) Reneau in Decatur, Tenn. She moved to the Nashville/Hastings area and attended Briggs School and graduated from Hastings High School in 1936.

She married Paul Goforth

on Dec. 17, 1937. He preceded her in death in July 1999 after 62 years of marriage.

She was an excellent cook and enjoyed gardening and spending time with her grandchildren.

Preceding Mrs. Goforth was her husband, Paul Goforth Sr.; parents, Jack and Lora Reneau; sister, Ruby Skidmore; brothers, James Reneau, Arundal Reneau and Edward Reneau; and step-grandson, John Altoft.

Surviving are daughters, Delphia (Elgin) Totten, Mary Ann (Wes) Erwin, Lorraine (Lester) Altoft, Kathy (Leo) Hine, Bernice

(Dan) Shilling, and Brenda (Ron) Armour; and sons, Paul (Mary Jo) Goforth, Jr., Joe (Gayle) Goforth and Tom Goforth.

Funeral services were held Wednesday, Jan. 16, 2002 at Nashville Baptist Church. Pastor Lester DeGroot officiated. Interment at Wilcox Cemetery.

Memorial contributions may be made to Carveth Memorial Gardens or Activity Center or Nashville Baptist Church Youth Parsonage.

Arrangements were made by Maple Valley Chapel, Nashville.

La Leche League to meet Jan. 24

The La Leche League will meet at 10 a.m. Thursday, Jan. 24, at 5777 Irish Road, Vermontville.

LaLeche League is a non-sectarian, non-profit organization that encourages women to breastfeed their babies and offers them support and information. The name LaLeche means "the milk" in Spanish.

The group holds a series of meetings Thursday mornings in and around Barry County, including Vermontville, Clarksville and the Yankee Springs area. There essentially are four topics, with one being presented each month.

This month's topic will be "The Advantages of Breastfeeding to Mother and Baby."

All women who are breastfeeding or are pregnant and interested in breastfeeding are welcome to attend the meetings. Babies and toddlers also are welcome. The group also has a lending library with topics on pregnancy, childbirth, child development and nutrition.

For more information about La Leche League and its meetings, or for help with breastfeeding, call Kathy Othmer at (517) 726-1264. For directions to the meeting, call 795-7021.

In loving memory

Paul E. Williams
Jan. 24, 1928 - Jan. 20, 2000

*Grandpa—You are our Angel.
Please watch over us.
Follow us wherever we go.
We love and miss you, very much.*

Granddaughters Lynn & Anna



MAPLE VALLEY Real Estate

227 N. MAIN ST., NASHVILLE

Phone (517) 852-1915 Fax: 852-9138

Web Site: www.lansing-realestate.com

Broker, Homer Winegar, GRI

Member of Greater Lansing Association of Realtors, and Multiple Listing Services; Also Grand Rapids Multiple Listing Service



EQUAL HOUSING OPPORTUNITIES

• Multiple Listing Service (MLS) • Home Warranty Available

 <p>PEACEFUL "COUNTRY LIVING"</p> <p>With this 3 bedroom mobile home on one acre. Double roof over home, 2 car garage & storage shed, well groomed lawn with large garden space. 1 1/2 miles from town. Call Homer. (CH-149)</p>	 <p>NICE "STARTER" OR "RETIREMENT" HOME JUST OFF M-79</p> <p>2 bedroom bungalow with many new improvements & 2 1/2 car garage on 2 acres with a creek. Immediate possession! Call Homer. (CH-156)</p>	 <p>PRICED REDUCED! NOW \$89,900!!! NASHVILLE "RIVERFRONT"</p> <p>2 bedroom ranch retirement or starter home, central air, full basement, riverside deck and garage. Fenced rear yard. Call Homer. (N-147)</p>
 <p>\$269,900! OUTSIDE OF HASTINGS</p> <p>Beautiful walkout ranch built in 1997. Great room w/central fireplace, large kitchen w/oak flooring & cabinets, central air, 1st floor laundry, 2 car garage. Must see to appreciate. Call Jerry for all the "info". Near Hastings on 1.45 acre lot. (H-123)</p> <p>"VIRTUAL TOUR" www.realtor.com</p>	 <p>SELLER SAYS BRING ALL OFFERS!! SOUTH OF NASHVILLE ON 2+ WOODED ACRES.</p> <p>Secluded setting, 3 bedroom manufactured home, 3 years old, full basement, fireplace, master bedroom with bath. Must see to appreciate. Call Homer for more "Info". LISTED AT \$125,000! Assumable mortgage. (CH-127)</p>	 <p>"SIDEWALK CAFE" IN NASHVILLE</p> <p>Great chance to become your own boss. Must see to know possibilities! Located center of town, plenty of on & off street parking. Charming small town "Cafe". Call Jerry for full details. (N-148)</p>

VACANT LOTS & LAND

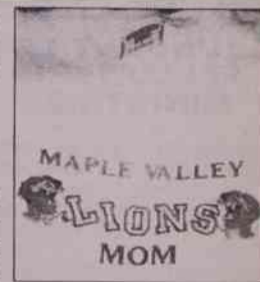
BUILDING LOT IN VERMONTVILLE!

Suitable for "walk-out" basement, wooded, good location, all surveyed. Call Myle for details. (VL-150)

ON MAIN ROAD NORTH OF VERMONTVILLE. CHOICE OF 3 PARCELS

SURVEYED, PERKED & DRIVEWAY PERMITS. 2 acres, 7 acres, 9 acres or 10 acres. Some have natural gas or possible pond sites. All seeded to alfalfa hay & are on blacktop road. Call Homer for all the details!! (VL-134-137)

Maple Valley Cheerleaders To Sell Sweatshirts



The Maple Valley Cheerleaders will be selling sweatshirts. The front has two lions on each end with LIONS in the center. Personalization comes in the form of Mom, Dad, Grandmother, and Grandfather, Staff.

Sale starts Monday, January 21. Sale ends Friday, February 8. Delivery will be approximately 3 weeks later around March 11. This is a pre-paid order only. Make checks payable to Maple Valley High School attention Cheerleaders. The cost of the sweatshirts will be S-XL \$35.00; 2X & 3X will be \$38.00; this is all for the personalization. If you would like just a plain Lions sweatshirt it will be \$30.00. The shirts are a 50/50 blend, 8 oz., brand is Lee, light grey in color.

Cheerleaders and or parents will be outside the gyms to sell the shirts for the duration of the sale, starting Tuesday, Jan. 22.

If you have any questions or are unable to get to a game and would like to order one please call Dawn Conklin @ 726-1266 and leave a message. PLEASE DO NOT CALL THE SCHOOL.

Leslie plays like champ in win over Lady Lions

Coming into the season, the Leslie Blackhawks were picked by most as the top volleyball team in the SMAA.

Leslie played like it last Wednesday at Maple Valley, blowing through the Lady Lions 15-3 and 15-2.

It was the first loss for Maple Valley in the conference, evening its record at 1-1.

Senior co-captain Miranda Farr and fellow senior Shelby Cousins each scored three kills for the Lions in the match. Junior setter Krystal Root had four assists.

Farr recorded two digs, and junior Jessica Mansfield served one ace. Junior co-captain Jessie Grant and senior frontliner Camille Wieland each had one block assist.

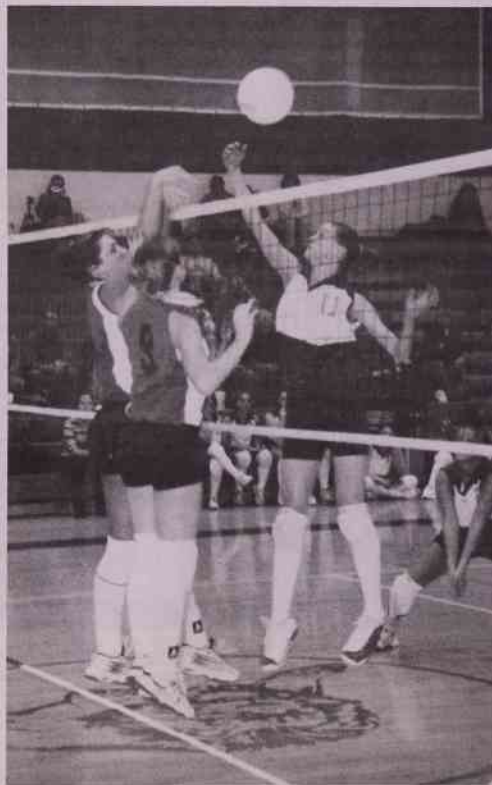
Maple Valley (3-13-3 overall) travels to Bellevue this Wednesday night, with the freshman, JV and varsity teams all scheduled to compete. Play begins at 6 p.m. The Lions then host Portland St. Patrick on Monday, Jan. 28, also at 6 p.m.

Top right:

Ashley Gordeneer spans a spike at Leslie. (Photo by Perry Hardin)

At right:

Valley's Jessie Grant (11) challenges two Blackhawks at the net. (Photo by Perry Hardin)



Garage Sale

2 FREE GARAGE SALE signs with your ad that runs in any of our papers. Get them at J-Ad Graphics, 1351 N. M-43 Hwy., Hastings. At the front counter.

Jobs Wanted

HOUSE/BUSINESS CLEANING! IN the Woodland/Vermontville area. Evenings, reasonable rates, have references (616)367-4389

YOU WANT QUALITY at affordable prices when you buy printing? Call J-Ad Graphics for everything from business cards and brochures to newspapers and catalogs. Phone (616)945-9554 or stop in at 1351 N. M-43 Hwy., Hastings.

Discover why State Farm insures more homes than anyone else.



See State Farm Agent:



Tal Gearhart
616-948-1284
866-948-1284
825 S. Hanover
St. Hastings, MI



Like a good neighbor, State Farm is there.®

STATE FARM FIRE AND CASUALTY COMPANY • HOME OFFICE: BLOOMINGTON, ILLINOIS

Planning a garage sale? Call 945-9554 to place your ad today!



PHOTO Center

Where you get your photos processed does matter

Don't trust those memories to anyone but the trained staff at Printing Plus where we care for those special moments you've captured on film!

35mm Film Processing
ONE HOUR SERVICE

One Hour, Same Day or Next Day Available

24 EXPOSURE SINGLE SET
INCLUDES INDEX PRINT

\$6.99

NOW ONLY

1-Hour Processing Additional



APS Processing

25 EXPOSURE SINGLE SET
INCLUDES INDEX PRINT

\$9.99

Panoramic Prints Additional



Double Prints
35mm or APS

with original processing...

99¢



SPECIALTY PAPERS

SEE OUR HUGE SELECTION OF COLORS & SPECIAL TEXTURES

COPIES

BLACK & WHITE OR FULL COLOR
CHECK OUR PRICES!



Check out all our Special Services:

- Big Prints & Posters
- Folding & Laminating
- Collating
- Business Cards
- Custom Rubber Stamps
- Plastic Binding and more!



1351 N. Broadway (M-43) Hastings

616.945.9105

...in the Gray Barn

OPEN MON - FRI 8:30 - 6:00 • SAT 8:30 - 1:00

Schools' improvements shown in photo display



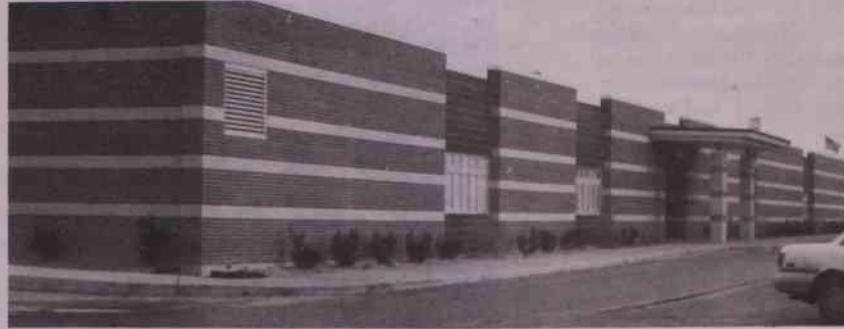
This is the old entrance onto the gym at the high school.....



And this is the new entrance by the new gym at the high school.



The old entrance to Maplewood school.



The new entrance to Maplewood school.



Just a bit ago, portable classrooms filled the area behind Fuller Elementary.



The view behind Fuller Elementary is now clear.

POSITION OPENINGS MAPLE VALLEY SCHOOLS

INSTRUCTION AIDE

Maplewood School
Hours: 6.5 hrs./day Monday through Thursday

Qualifications:

- High school graduate
- Must pass the instructional aide skill test
- Basic computer/software skills preferred
- Familiarity with computer operations preferred
- Must demonstrate patience and compassion
- Must be able to work well with young adolescents
- Must be flexible and self-directed in a variety of situations
- Must be able to work cooperatively with teachers, parents & administration

Duties may include, but are not limited to: working as an instructional aide in the library/computer lab and other instructional responsibilities as assigned by the building principal; lunchtime/playground supervision; other duties as may be assigned.

GENERAL AIDE

Maplewood School
Hours: 1.5 hrs./day Monday through Friday

Qualifications:

- High school graduate
- Must demonstrate patience and compassion
- Must be able to work well with young adolescents
- Must be flexible and self-directed in a variety of situations
- Must be able to work cooperatively with teachers, parents & administration

Duties may include but are not limited to: lunchtime/playground supervision; other duties as may be assigned by administration.

Applications are also being accepted for substitute paraprofessional aides for all district buildings.

Application should be made to the Administration Office, Maple Valley Schools, 11090 Nashville Highway, Vermontville, MI 49096 by January 31, 2002.



The old Maplewood playground.



The new Maplewood playground.

by **Shawna Hubbarth**
Staff Writer

There have been many changes in the Maple Valley school district in the last five years, with each school showing upgrades in infrastructure.

At last week's school board meeting, which was held at Fuller Elementary, visitors and the board had a chance to see those changes up close with a photo display of "before and after" photos.

play of "before and after" photos.

Superintendent Clark Volz credits the improvements from the community's willingness to vote for a major bond proposal several years ago, and the school board working on problems in the district as reasons for the improvements.

Highlights in the presentation included major renovations at Maplewood Ele-

mentary, including the addition of several classrooms, the front of the building being totally redone, and a new playground, which was just completed this past year.

Volz cited the absence of portables at Fuller as a major improvement there, which was made possible by the addition of classrooms to

Continued next page



The administration office before it was resided.....



This is the administration office after it was resided.

From previous page

the school. Fuller also received a new playground.

The high school received a new gym and numerous other improvements to its structure, and saw the addition of new practice fields, a new press box, and bleachers among other changes.

The administration building was improved, and many other structures in the school received new paint and repairs, including the press box and bleachers at the football field.

Volz said the photos helped illustrate the need for helped bring into perspective the improvements and

further upgrades in the district.

Coach Roscoe, Lion gridders garner awards

by Matt Cowall
Sports Editor

Who says football players are just a bunch of dumb jocks?

The Maple Valley Lions are one of the teams that smash that stereotype, proving that success starts in the classroom. They were recently named an Honorable Mention Academic All State Team for 2001 by the Michigan High School Football Coaches Association (MHSFCA).

Academically, Maple Valley ranked ninth in the state in Division Six this past season with a 3.68 team GPA. Only eighteen teams were honored in Division Six, ranging from first-place Whittemore-Prescott (3.94 team GPA) to Hesperia (3.25 team GPA). The top four teams earned First Team status.

Roscoe named Assistant Coach of Year

In related news, Maple Valley assistant coach Don Roscoe received a 2001 Assistant Varsity Coach of the Year Award from the MHSFCA.

Roscoe, the pastor at Grace Community Church in Nashville, has been an assistant at Maple Valley for 15 years. He coaches the offensive line and is the defensive coordinator.

Maple Valley head coach Guenther Mittelstaedt nominated Roscoe for the award. Mittelstaedt talked him into joining the Lions' staff in 1987.

"Don is just a great guy, and he's done a wonderful job for our football program," said Mittelstaedt. "He's a wonderful person to have on our staff and in our community."

Roscoe was the cross country coach at Maple Valley and had been involved in youth football, so the transition to the football staff was smooth.

"It was a tough decision to leave cross country, but I don't have one regret," Roscoe said of joining the football staff. "My son was a freshman at the time, and I got to coach him for the three years he was on varsity."

Roscoe cut his teeth on the sport as the smallest lineman in a good program at Battle Creek Springfield High School. He offset his lack of size by working on quickness and leverage, and by developing a thorough knowledge of the game, the same skills he tries to pass on to Valley linemen today.

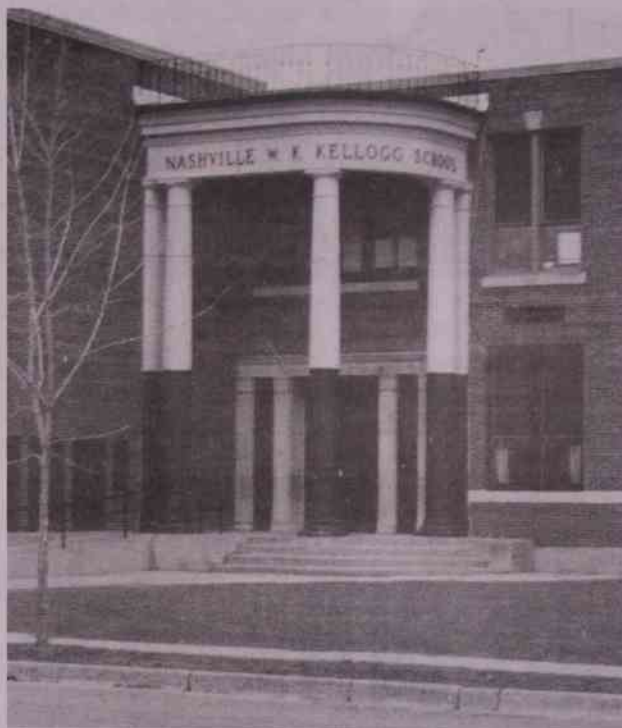
"We've been fortunate in my time here to have wonderful kids who are coachable and have a lot of heart. That's why we win," Roscoe said.

He also praised the support of the school's administration and the community at large. "The fan base at the Valley is second to none," he said. "When you have more people at an away game than the home team, you know they care. It makes coaching fun."

Coaching for Roscoe is more than fun; it's something of a higher calling. His father was not part of his childhood, and Roscoe found in coaches what he could not find at home.

"Coaching is something I have wanted to do all my life," he said. "I had good coaching role models when I was young, and I don't know where I'd be in life without them."

"It made me believe that if a man can help one kid reach his God-given potential, he has lived a good life. It was done for me, and now I'm trying to do it for others."



The Kellogg School entrance before.....



and the Kellogg entrance after.

Business Services

VERMONTVILLE ROOFING: licensed & insured. Owner operated for 15 years. David Halliwill, owner. (517)543-1002

Pets

CHOW PUPPIES FOR sale, 1 female & 4 males, born Dec 9, 2001, ready now, females, \$100, males \$150, call evenings for details (517)852-3955

EWING WELL DRILLING INC.

OFFERING COMPLETE WATER & WELL DRILLING & PUMP

SALES & SERVICE 4" TO 12" WELLS

- Residential
- Commercial
- Farm

We stock a complete line of...

- Pumps • Tanks
- Plastic & Steel Pip
- Other Well Supplies

WE OWN OUR OWN EQUIPMENT & DO OUR OWN WORK.

Matthew D. Ewing
Owner

GRAVEL WELLS
A SPECIALTY

Estimates Available



(517) 726-0088

10076 NASHVILLE HWY.
VERMONTVILLE

HOME-SWEET-HOME

Fix-Ups

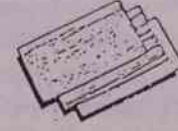
CertainTeed
Fiberglass
Insulation



Merrillat
AMERICA'S CABINETMAKER
Cabinets



Come home to quality.
Andersen.



Plywood
Lumber

Oak
Pine
Molding



Plumbing
Supplies



USG
Drywall



Armstrong
Ceiling Tile



Hand &
Power Tools

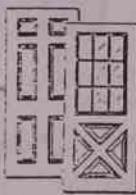


Paints



Dry Mix
Crete & Supply

Wolverine Technologies
Time for New Siding?



Marque-Line
DOOR SYSTEMS
Pre-Hung
Steel Doors



The
World Leader
in Specialty
Building
Products.
"Innovation is our
most valuable asset"

HOMETOWN

LUMBER & HARDWARE

Monday thru Saturday 7:30 a.m. to 5:30 p.m.
219 S. State in Nashville • 852-0882



www.hometownlumber.com

PUBLISHER'S NOTICE:

All real estate advertising in this newspaper is subject to the Fair Housing Act and the Michigan Civil Rights Act which collectively make it illegal to advertise "any preference, limitation or discrimination based on race, color, religion, sex, handicap, familial status, national origin, age or marital status, or an intention, to make any such preference, limitation or discrimination." Familial status includes children under the age of 18 living with parents or legal custodians, pregnant women, and people securing custody of children under 18.

This newspaper will not knowingly accept any advertising for real estate which is in violation of the law. Our readers are hereby informed that all dwellings advertised in this newspaper are available on an equal opportunity basis. To report discrimination call the Fair Housing Center at 616-451-2980. The HUD toll-free telephone number for the hearing impaired is 1-800-927-9275.



Continued next page

Huge meet looms Thursday for wrestlers

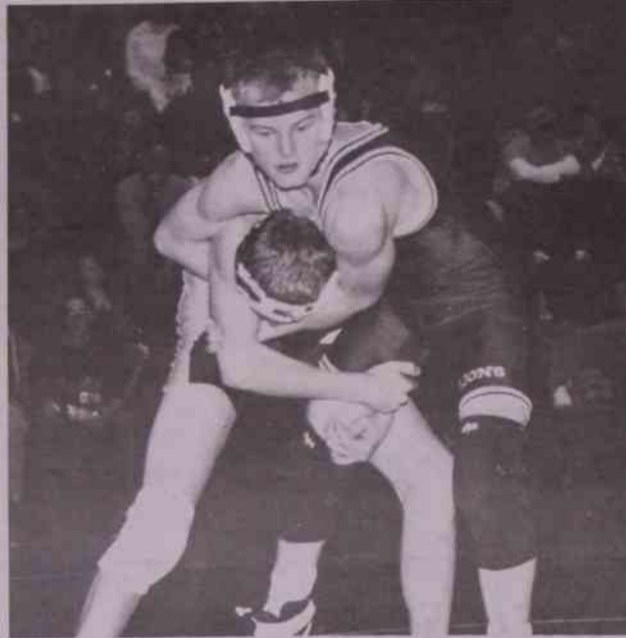
The biggest dual meets of the season await the Maple Valley varsity wrestling team on Thursday at Olivet.

The Lions and Eagles will be joined by Leslie, and the three teams will duke it out for SMAA supremacy. The results will all but determine this year's dual-meet conference champion. Wrestling begins at 6 p.m.

27 unlucky number in tri-meet

The Lions jumped up against some bigger schools and lost both of their matches at a tri-meet on Jan. 17, 53-27 against Class A St. Johns and 51-27 against Class B Charlotte.

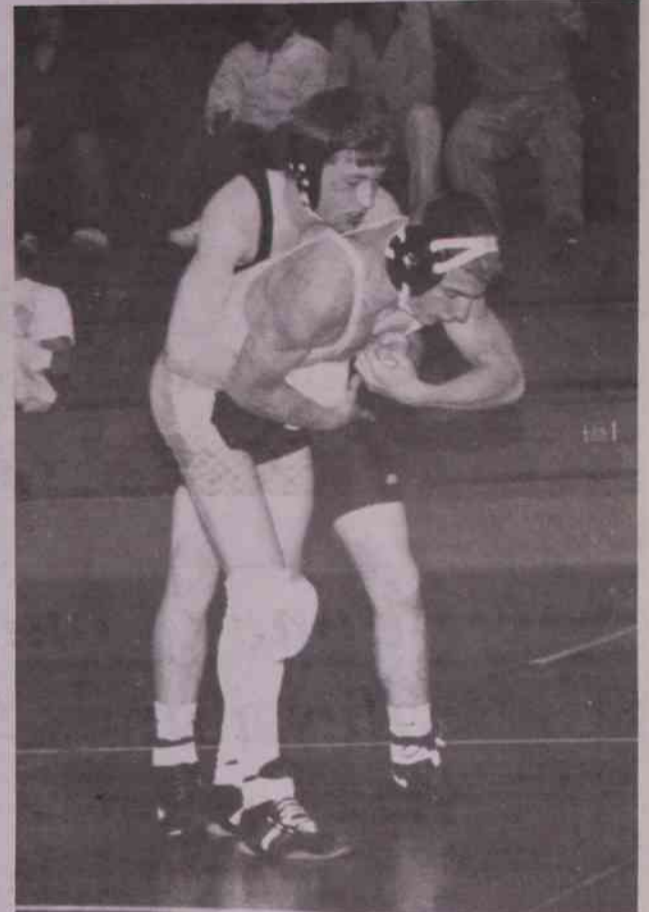
Two-time winners for the Lions on the night were Brandon Brooke (two pins at 125 pounds), Jason Silsbee (a pin against St. Johns and a 7-5 decision against Charlotte at 160) and Josh



Andrew Gaber (top).

Grasman (a pin against Charlotte and a 10-7 decision over St. Johns at 215).

Heavyweight Ben Swan earned a pin against St. Johns, and Laura Trumble



Brandon Brooke (top).

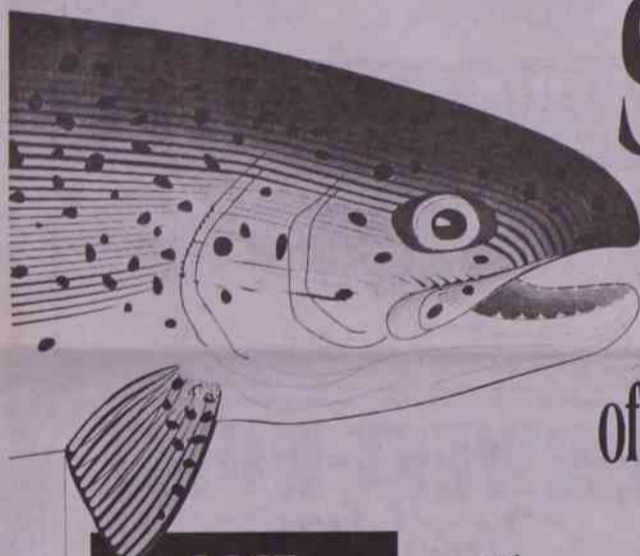
won by forfeit at 103 to account for Maple Valley's other points against the Redwings.

Against Charlotte, Andrew Gaber pinned his opponent at 112 pounds, and Ben Boss pinned at 130.

FROST HEATING & COOLING
Quality, Value & Service
ARMSTRONG
FREE ESTIMATES
(616) 374-7595 (517) 852-9565

Michigan Streams and Lakes

It's Fishing Season!



Stream MAP of Michigan

LOST STREAM MAP FOUND AND RESTORED

The recently published STREAM MAP OF MICHIGAN resembles another map—known to Pennsylvania anglers as the "Lost Stream Map."

The "Stream Map of Pennsylvania" was completed in 1965 after a thirty-year effort by Howard Higbee, a former Penn State Professor.

Professor Higbee succeeded in creating a map of the highest detail possible...a map that shows every stream and lake. He painstakingly plotted by hand, the location of 45,000 miles of streams onto a 3 x 5 foot map.

The map sold extremely well—until it was lost several years after it first appeared in print. Incredibly, the printer entrusted with the original drawing and printing plates, declared bankruptcy, then carelessly hauled Higbee's 30 years of work to a landfill.

The few remaining dog-eared copies became a prized fisherman's possession. Professor Higbee was offered \$400 for one of his last maps. And state agencies were forced to keep their copies under lock and key.

Experts told Professor Higbee that reprints were impossible, because the maps were printed in non-photographic blue.

Then, in 1991, at the age of 91, Howard Higbee's dream came true. Computers made it possible to reprint the map. Holding an updated map, Howard said, "I never thought I'd live to see this day."

Then, by combining Professor Higbee's knowledge with computer technology—the STREAM MAP OF MICHIGAN was created.

Why every fisherman and boater needs this map

It is estimated that 10% of all the fishermen catch 90% of the fish. Regardless of which group you fall into... there's a sure way to up your odds... simply try new fishing waters. Fish where few fishermen ever fish.

Michigan is loaded with great fishing waters...many of them overlooked. From the AuSable River to all of the Great Lakes tributaries to the Pere Marquette River...thousands of miles of streams, lakes and rivers are now easy-to-locate on one map.

Professor Higbee's Stream Map of Michigan is the first and only highly detailed map of its kind. This new 4 foot by 4 foot color map shows virtually all of the 35,000 miles of Michigan streams & lakes.



RAVE REVIEWS

"It is amazingly detailed and names some creeks in the Mohawk Valley that can't even be found on topographic maps."

John Pitarres
OBSERVER-DISPATCH-Utica

"If you're looking for the most definitive maps ever created depicting every single creek, river, stream, pond and lake...then 'Professor Higbee's Stream Maps' are without question the finest."
Howard Brant
THE NEWARK STAR-LEDGER

"It is in showing where to find out-of-the-way trout streams that makes the map such a treasure to the fisherman."
Joe Gordon
TRIBUNE-DEMOCRAT-Johnstown

FREE LOCATION GUIDEBOOK INCLUDED

Pinpoint the best fishing in Michigan with this valuable 40 page guide. Easily locate over 5,000 streams and lakes shown on the "Stream Map." Your map and guidebook will take you to the top 443 fishing waters--select waters for 14 species of gamefish.

ORDER YOUR COLOR STREAM MAPS

Available rolled or folded. ALSO AVAILABLE in heavy gauge LIFE-TIME GUARANTEED, glass-like clear-lamination, write-on wipe-off surface, with brass eyelettes for easy hanging.

- Send me 4 FT by 4 FT ROLLED map(s) postage paid at \$24.45 ea.
- Send me 4 FT by 4 FT FOLDED map(s) postage paid at \$24.45 ea.
- Send me 4 FT by 4 FT LAMINATED map(s) postage paid at \$44.45 ea.

Check or money order enclosed \$ 2 - 3 DAY PRIORITY MAIL INCLUDED

EACH ROLLED AND LAMINATED MAP SHIPPED IN A STURDY STORAGE TUBE

Name _____
Address _____
City _____ State _____ Zip _____

Mail completed coupon with payment to:

JAD GRAPHICS

1351 N. M-43 Hwy.

P.O. Box 188 Hastings, MI 49058-0188

An easy dessert that's good for you

(NAPS)—Sweet potatoes (yams) are not only delicious, but are good for you, too. They contain vitamins A, C and B6, beta-carotene, iron, potassium and fiber. Sweet potatoes are also low in fat and sodium. In fact, the Center for Science in the Public Interest (CSPI) named sweet potatoes the #1 most nutritious vegetable. Which means you can eat a dessert made with sweet potatoes and feel good about it.

- 1 (15 oz.) can sweet potatoes (yams), drained and mashed or 1 cup fresh sweet potatoes, cooked and mashed
- 1 1/2 cups dark brown sugar
- 1 large egg
- 1 large egg white
- 2 tsp. vanilla extract
- 1 (9 in.) prepared reduced fat graham cracker crust

Blend cream cheese and yogurt on medium speed until creamy. Add sweet potatoes and brown sugar; mix well. Add egg and egg white; beat on low after each addition. Blend in vanilla. Spoon mixture into crust. Bake at 350 degrees F for 45 to 50 minutes or until set. Remove from oven and cool. Refrigerate 2 hours or until chilled. Makes 10 to 12 servings.

For more yam recipes and nutritional facts, visit the Louisiana Sweet Potato Commission Website at www.sweetpotato.org.



Easy to make, easy to like!

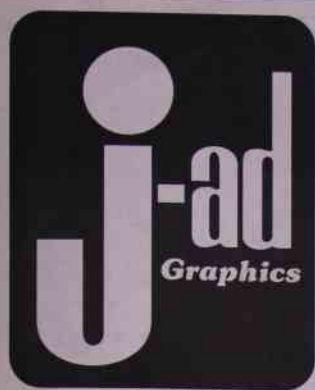
Sweet Potato Cheesecake

- 2 (8 oz.) packages light cream cheese
- 1 cup nonfat plain yogurt

COBB
Well Drilling & Repair

Residential • Commercial • Farm
Submersible & Jet Pump & Tank
Sales - Service
2", 5" Well Drilling & Repair

Richard Cobb • David Cobb
517-726-0377
270 N. Pease Rd.
Vermontville Mich. Lic. #23-1748



Looking For a

PRINTER?

FULL SERVICE FROM START TO FINISH

Call one of our Sales Professionals today!

- Bill Love • Steve Steward
 - Jennie Jacobs
 - Neil Braendle
 - Cheryl Jones
- (at Charlotte Litho)

SPECIALIZING IN MULTI-COLOR AND 4 COLOR PROCESS WORK WHERE NO JOB IS TOO BIG AND NEVER TOO SMALL!

- | | |
|-------------------|---------------|
| • Letterheads | • Folders |
| • Business Cards | • Books |
| • Annual Reports | • Stickers |
| • Brochures | • Invitations |
| • Flyers | • Labels |
| • Posters | • Tags |
| • Political Signs | • Envelopes |
| • Rubber Stamps | • Tickets |
| • Business Forms | • Balloons |
| • Newsletters | • Calendars |
| • Computer Forms | • Catalogs |



1-HOUR PHOTO PROCESSING



ADVANCED COMMERCIAL PRINTERS, located in downtown Hastings has moved to it's new location just north of Hastings on M-43 next to J-Ad Graphics production facility at 1351 N. M-43 Hwy. in the BARN!

Try our new advanced photo processing system using the latest in digital technology providing you with the highest quality reproduction possible.

We process 35mm Advanced Photo System and 120 film on site.

1 Hour or Next Day Processing

- COLOR COPIES
- COMMERCIAL PRINT
- INVITATIONS & MORE



1351 N. M-43 Hastings Only, In The Gray Barn

(616) 945-9105

Hours: Mon. - Fri. 8:30 a.m. - 6:00 p.m., Sat. 8:30 a.m. - 1:00 p.m.

Barry County's Most Complete Printing Facility

SERVICING KALAMAZOO, GRAND RAPIDS, BATTLE CREEK, LANSING AND THE SURROUNDING AREAS DAILY!

- PICK-UP AND DELIVERY
- MAILING SERVICE
- COMPLETE BINDERY
- WEB AND SHEET FED OFFSET PRINTING

— LOCATED AT —
 1351 North M-43 Highway (just north of city limits)
 Hastings, MI 49058-0188
(616) 945-0788
Fax (616) 945-5192

144 S. Cochran (right on Charlotte's Main Street)
 Charlotte, Michigan 48813
(517) 543-4041
Fax (517) 543-2272

Lion cagers seize SMAA league lead from Olivet

A capacity home crowd watched the Maple Valley varsity boys' basketball team snap a first-place tie with Olivet atop the SMAA on Friday night, 65-56.

The Lions are a perfect 6-0 in the conference, while Olivet fell to 5-1.

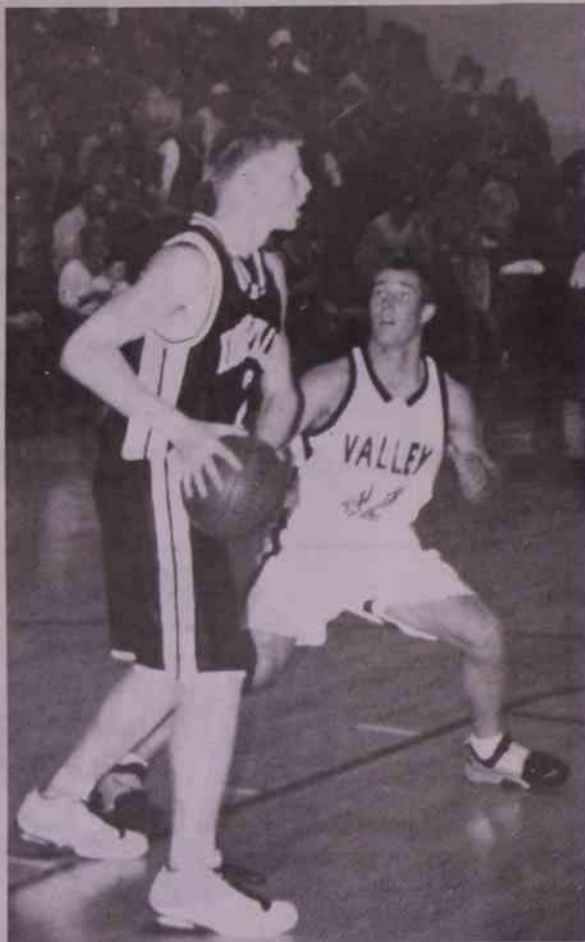
"The gym was packed, emotions were high and our kids played extremely well," Maple Valley coach Jeff Webb said. "They kept their heads on and made good decisions when they needed to."

There was a time when Olivet would've tried to run-and-gun with the Lions, but the Eagles are now more of a half-court team, and the pace wasn't to Valley's liking early in the game. Olivet led by a point at the half, 23-22, in a back-and-forth contest.

"It took us a while to get the tempo up where we wanted it," Webb said.

The game stayed tight until Maple Valley pulled away on the strength of balanced scoring and a 27-point outburst in the fourth quarter.

Senior guard Nick Jones and junior forward Jeff Taylor were two big reasons for the Valley's fourth-quarter success. Jones went 8 for 8 from the free throw line in the fourth and finished with 12 points and four steals on



Eric Smith (42).

the night. Taylor came off the bench and scored all seven of his points in the quarter.

Senior guard Darin Thrun scored 12 points despite fouling out with around three minutes still remaining in the game. Senior forward John Terberg muscled his way to 11 points and seven rebounds.

Junior forward Eric Smith was the fourth Lion to score in double figures with 10 points. Senior forward Devin Phenix added four points and four assists.

Webb and the Lions know that from here on out, they're the team the rest of the league is gunning for,

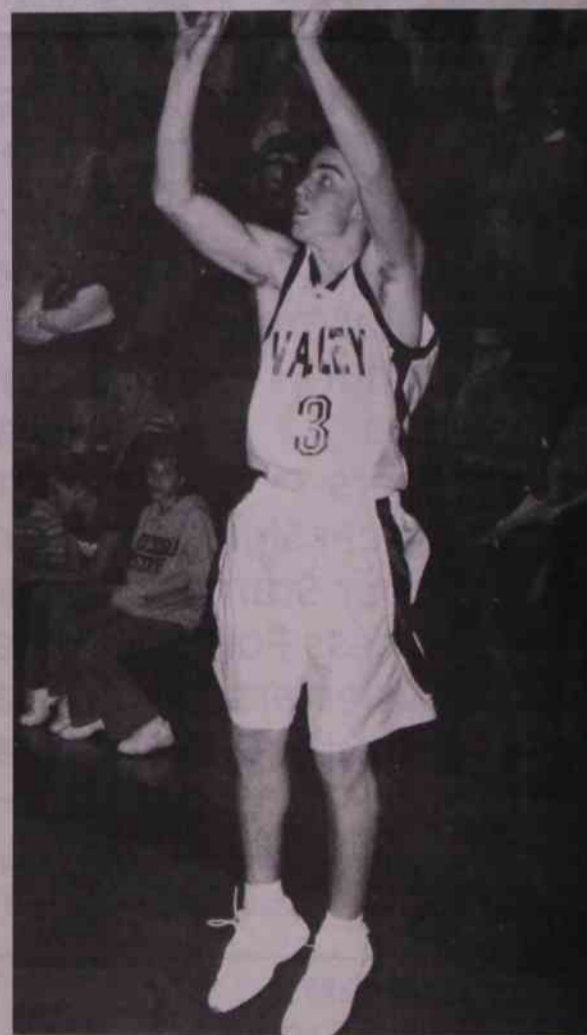


Darin Thrun (32). (File photo by Perry Hardin)

but they think they're up for the challenge.

"It feels good to be in first and the team is enjoying it, but I don't think they're satisfied yet," Webb said. "They know we have to play these teams again."

The Lions (6-3 overall) step outside the league tonight when they host Portland at 7:30. They begin a four-game road trip on Fri-



Jeff Taylor (3).

day night with a conference game at Webberville.

Maple Valley 67, Lansing Christian 63

The Valley went up early, stayed up for most of the game, and held off a Pilgrim rally late to earn this SMAA road win on Jan. 15.

Darin Thrun led the way with 20 points. Nick Jones had 15 points and five assists, and junior forward Jim Hirneiss scored 13.

Devin Phenix had four points and nine rebounds, and Eric Smith added seven points.

**Call 945-9554 for
Maple Valley News
ACTION-Ads!**

Wing Dings 99¢ lb (While Supplies Last)	Pork Cutlets \$1.99 lb	Combo Roast \$1.99 lb	Ranch Steaks \$1.89 lb	Emgee Deli Bologna \$1.49 lb
T&C Spiral Ham 99¢ lb	Land O Frost Chipped Meats 2/\$1 2.5 oz.	Pork Hocks 59¢ lb	Chuck Roast \$1.89 lb	Beef Liver 59¢ lb
Bareman's 2% Milk \$1.99	Bareman's 1/2 Gallon Orange Juice 99¢	8 oz. Parade Cream Cheese \$1.09	10.75 oz. Campbell's Tomato Soup 65¢	7 oz. Taster's Choice \$5.49
Country Maid 1/2 Gallon Ice Cream \$1.99	16 oz. Old El Paso Taco Sauce \$1.79	16 oz. Old El Paso Refried Beans 89¢	8 ct. Nestle Nesquick Cocoa \$1.29	32 oz. West Pak Frozen Vegetables \$1.99
				5 lbs. Idaho Potatoes \$1.19
				Asst. Var. Di Giorgio Pizzas 2/\$8

Slide On In... for GREAT SAVINGS!

Vermontville Grocery
Phone 726-1570
We now have **LOTTERY TICKETS**

Winter Store Hours: Mon.-Sat. 9 am-7 pm, Sun. 11 am-5 pm • Prices good thru Saturday

We Now Accept W.I.C. & EBT
We accept: VISA, M.C., Discover, and other cards, too.

day night with a conference game at Webberville. Maple Valley 67, Lansing Christian 63 The Valley went up early, stayed up for most of the game, and held off a Pilgrim rally late to earn this SMAA road win on Jan. 15.

Darin Thrun led the way with 20 points. Nick Jones had 15 points and five assists, and junior forward Jim Hirneiss scored 13.

Devin Phenix had four points and nine rebounds, and Eric Smith added seven points.